

MECCANOTM
M A K E R S Y S T E M

**ALL-TERRAIN RACER
QUAD**

14302



 **10+**

Instructions
Notice de montage
Instrucciones de construcción
Bauanleitung

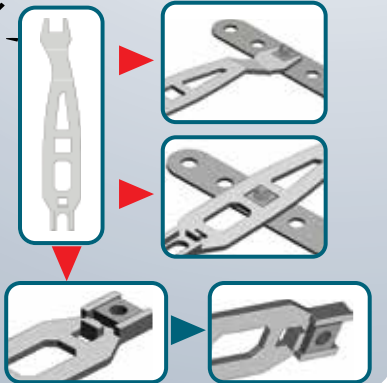
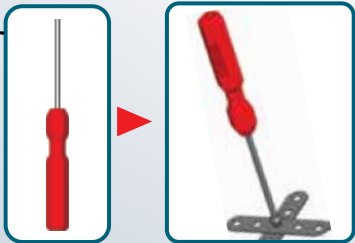
Bouwinstructie
Istruzioni
Instruções
Инструкции





**CONSTRUCTION TIPS
ASTUCES DE CONSTRUCTION**

TIPS DE CONSTRUCCIÓN
TIPPS ZUM BAUEN
MONTAGETIPS
SUGGERIMENTI PER COSTRUIRE
DICAS DE MONTAGEM
РЕКОМЕНДАЦИИ ПО СБОРКЕ



NEW TOOLS/NOUVEAUX OUTILS

NUEVAS HERRAMIENTAS/NEUE WERKZEUGE/NIEUW GEREEDSCHAP
NUOVI ATTREZZI/NOVAS FERRAMENTAS/ХОББИЕ ИНСТРУМЕНТЫ

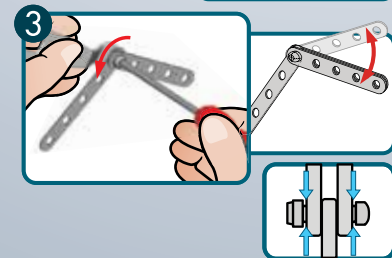
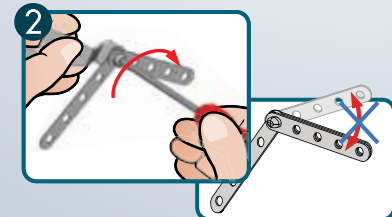
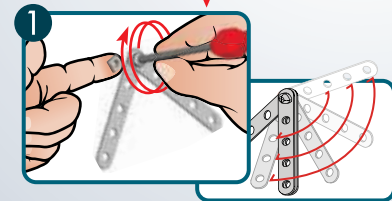
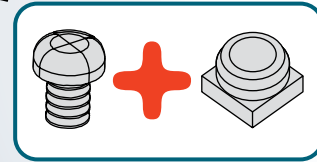
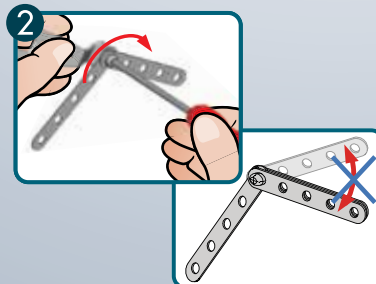
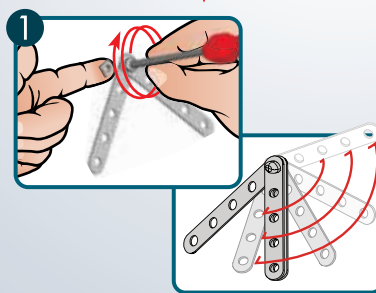
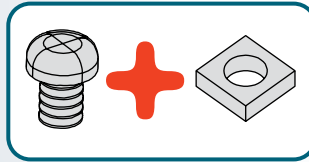


TABLE OF CONTENTS/SOMMAIRE

ÍNDICE/INHALTSVERZEICHNIS/INHOUD/INDICE/ÍNDICE/СОДЕРЖАНИЕ



AVAILABLE ONLINE/DISPONIBLE EN LIGNE
DISPONIBLES EN LÍNEA/ONLINE VERFÜGBAR/
ONLINE BESCHIKBAAR/ DISPONIBILI ONLINE/
DISPONÍVEL ONLINE/ДОСТУПНЫ В ОНЛАЙН-МАГАЗИНЕ






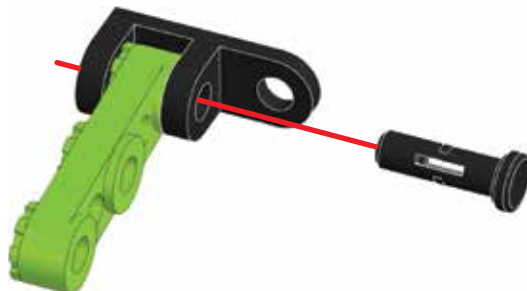
GB. Content: 205 parts, 2 real tools, 1 sticker sheet and 1 instruction sheet for model#1.
F. Contenu : 205 pièces, 2 vrais outils, 1 feuillet d'autocollants et 1 notice de montage pour le modèle 1.
E. Contenido: 205 piezas, 2 herramientas reales, 1 hoja de calcomanías y 1 guía de instrucciones para el modelo 1.
D. Inhalt: 205 Teile, 2 echte Werkzeuge, 1 Bogen mit Aufklebern und 1 Bauanleitung für Modell Nr. 1.
NL. Inhoud: 205 onderdelen, 2 stuks gereedschap, 1 stickervel en 1 gebruiksaanwijzing voor model 1.
I. Contenuto: 205 pezzi, 2 attrezzi, 1 foglio di adesivi e 1 guida per l'uso per il modello 1.
P. Conteúdo: 205 peças, 2 ferramentas reais, 1 cartela de adesivos e 1 folha de instruções para o modelo 1.
R. В коробке: 205 деталей, 2 настоящих инструмента, 1 лист с наклейками и 1 инструкция по сборке модели №1.

GB. Building instructions for model#2 are available at www.meccano.com.
F. La notice de montage du modèle 2 est disponible sur www.meccano.com.
E. Hay instrucciones de construcción disponibles para el modelo 2 en www.meccano.com.
D. Die Bauanleitung für Modell Nr. 2 ist auf www.meccano.com zu finden.
NL. Bouwinstructies voor model#2 zijn beschikbaar op www.meccano.com.
I. Le istruzioni di montaggio del modello 2 sono disponibili alla pagina www.meccano.com.
P. As instruções de montagem para o modelo 2 estão disponíveis em www.meccano.com.
R. Инструкции по сборке модели №2 можно найти на сайте www.meccano.com.

GB. Only one model can be built at a time. **F.** Les pièces fournies ne permettent de monter qu'un seul modèle à la fois. **E.** Solo es posible construir un modelo a la vez. **D.** Jeweils nur eins der Modelle baubar.
NL. Er kan maar een model tegelijk worden gebouwd. **I.** Permette di realizzare un solo modello per volta. **P.** Só é possível montar um modelo de cada vez. **R.** Одновременно можно построить только одну модель.



- 1**
-  **A420 (0260c) X4**
 -  **A418 (0260a) X4**
 -  **A421 (0126d) X4**



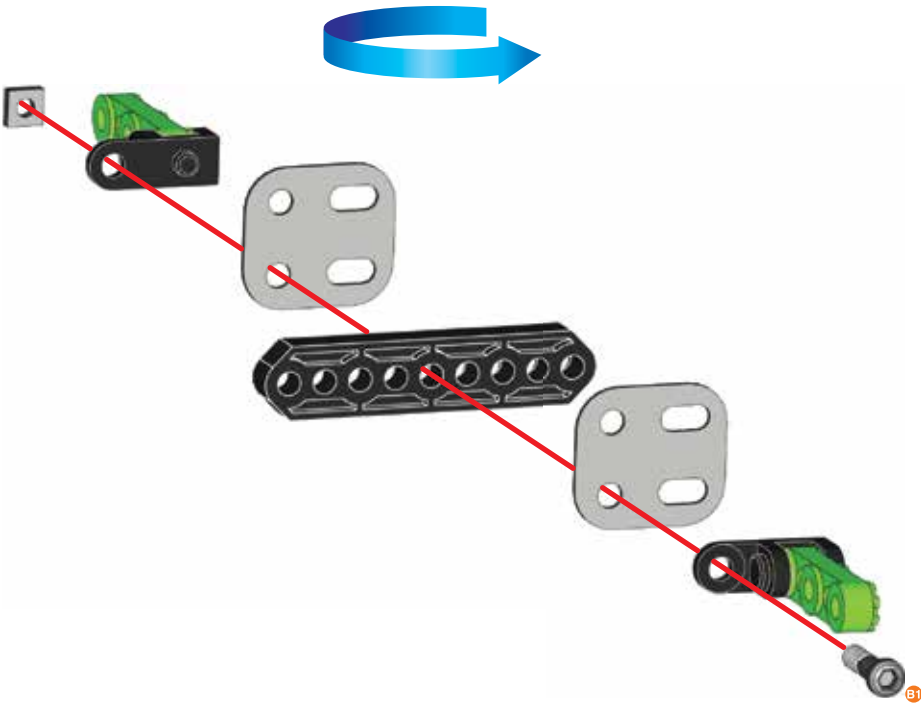
x4

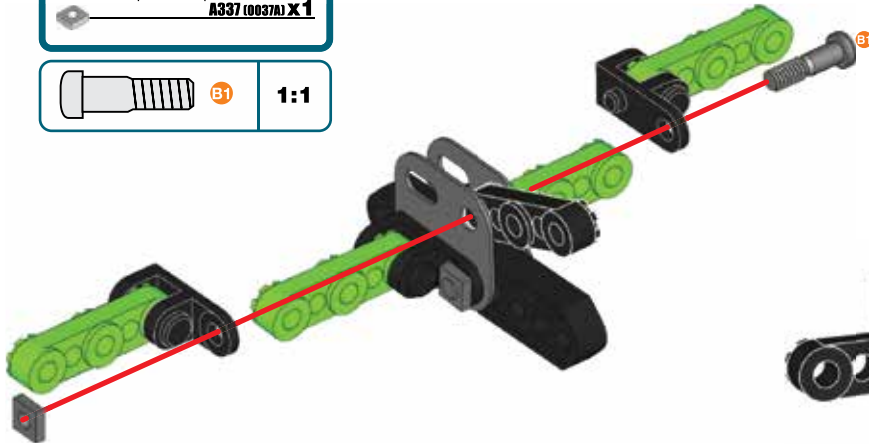
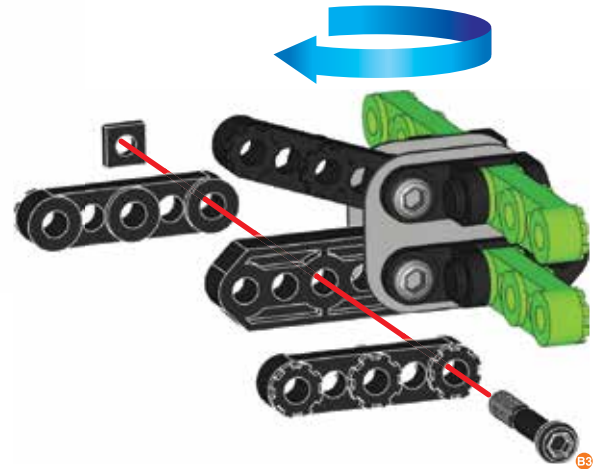


2

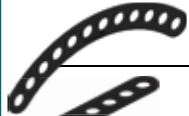
	B051 x 1
	A503 (0103U) x 2
	A247 (0147D) x 1
	A337 (0037A) x 1

	B1	1:1
--	-----------	------------



3**①+****A420 (0260C) X 1****A247 (0147D) X 1**
14,7 mm
37/64"**A337 (0037A) X 1****B1****1:1****4****A420 (0260C) X 2****B3** 23 mm
15/16"**A347 (0147E) X 1****A337 (0037A) X 1****B3****1:1**

5



C78 x2



C70 x2



SS | 25,4 mm | A912 (0111E) x1

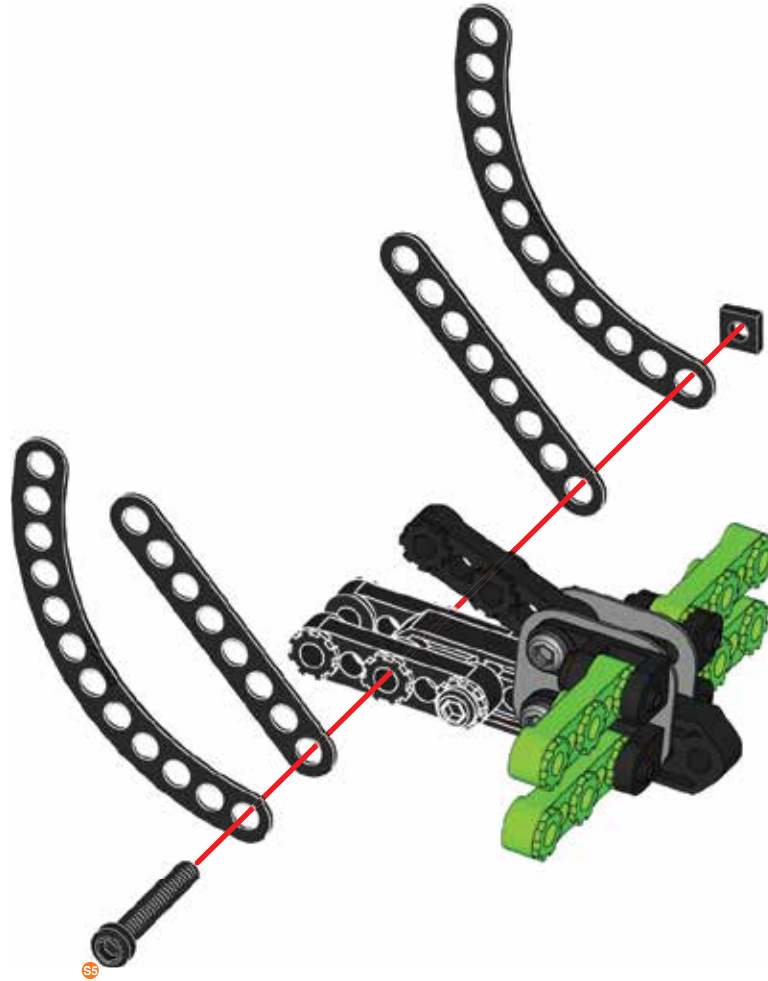


A337 (0037A) x1




SS

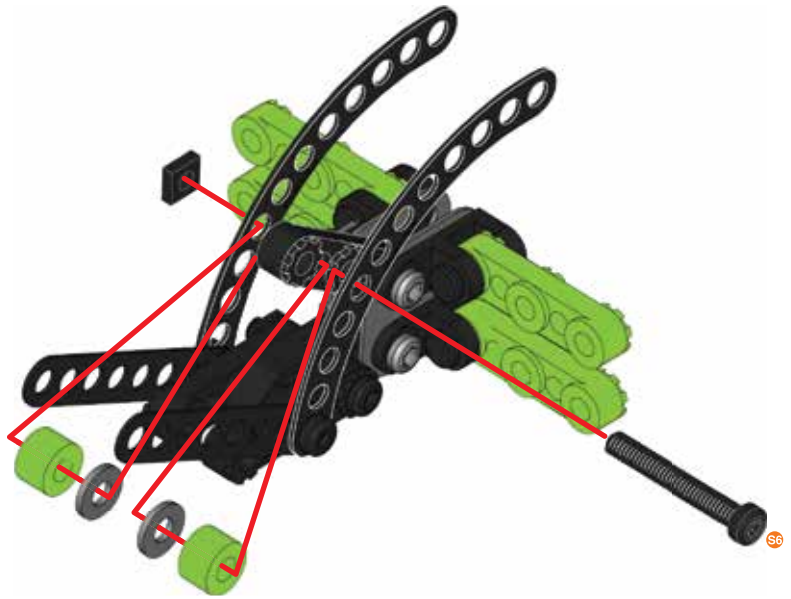
1:1




6

- A238 (0038A) X2
-  S6 | 28 mm | 1 1/8" | A611 (0111D) X1
- A337 (0037A) X1
- A138 (0038) X2

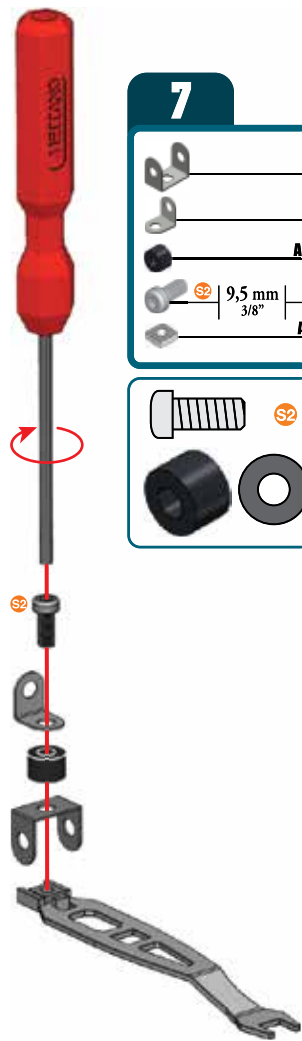
-  S6 | 1:1








7

- A811 (0811A) X1
- C330 X1
- A238 (0038A) X1
-  S2 | 9,5 mm | 3/8" | A511 (0111E) X1
- A337 (0037A) X1

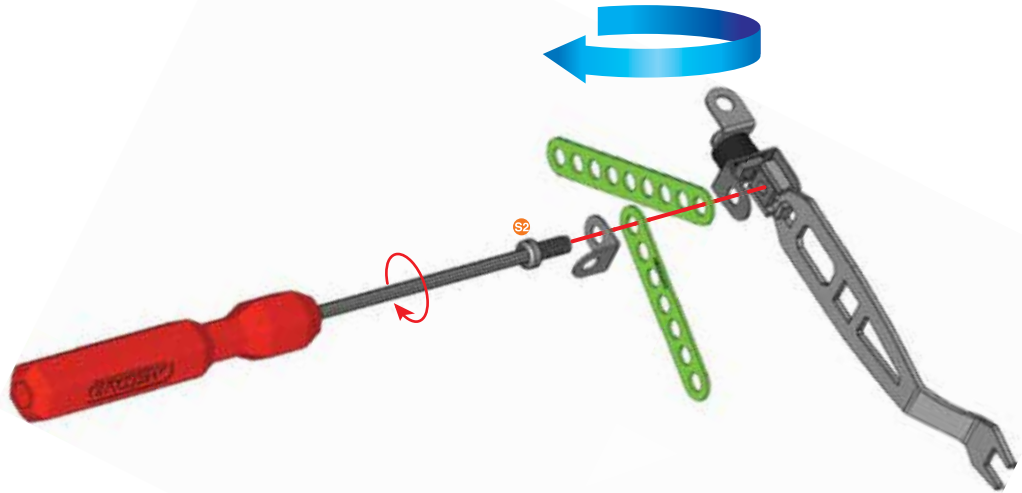
-  S2 | 1:1
-   A238








8 **7+**

	C771 x1
	C769 x1
	C330 x1
 S2 9,5 mm 3/8"	A511 (0111C) x1
	A337 (0037A) x1

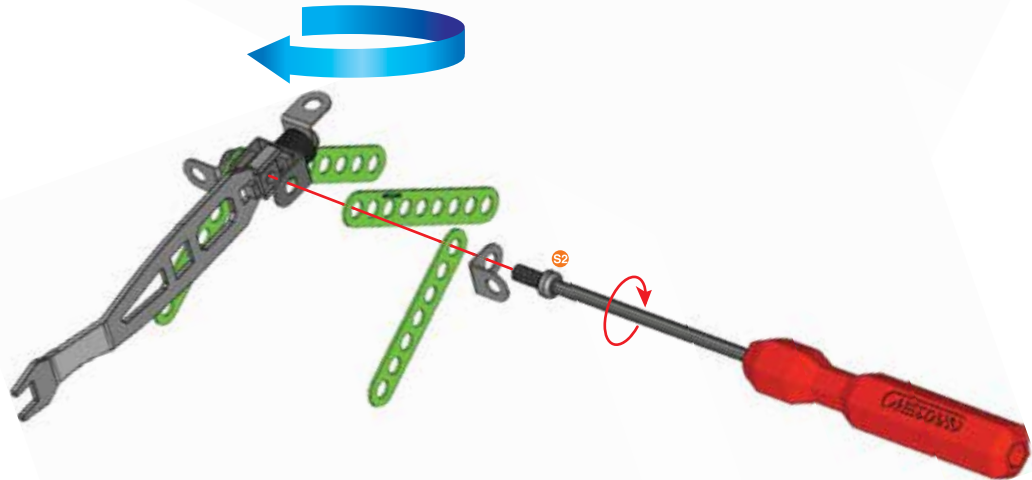
 S2	1:1
---	------------



9

	C771 x1
	C769 x1
	C330 x1
 S2 9,5 mm 3/8"	A511 (0111C) x1
	A337 (0037A) x1

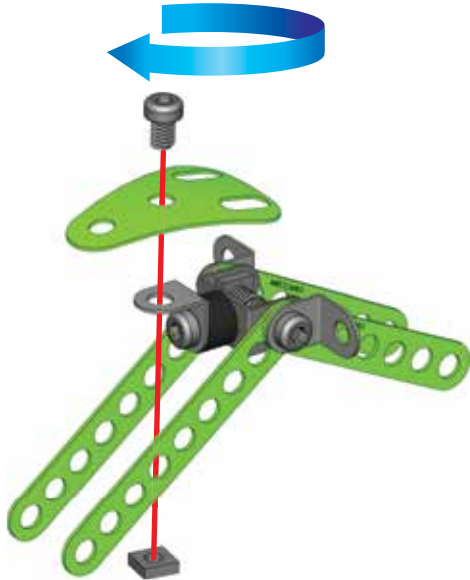
 S2	1:1
--	------------



10

	B684 X1
	A637 (00378) X1
	A337 (00378) X1

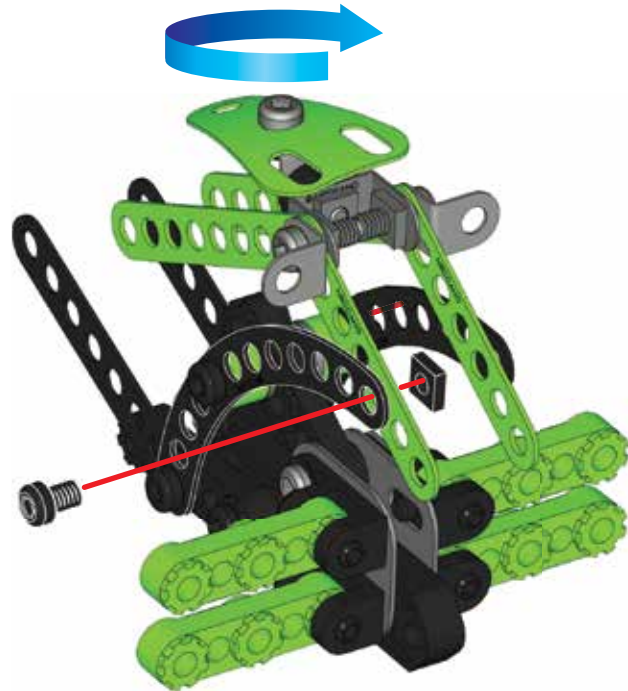
	S1	1:1
--	-----------	------------





11 **6 + 10 +**

	S1	5,8 mm 15/64"	A637 (00378) X1
			A337 (00378) X1

	S1	1:1
--	-----------	------------





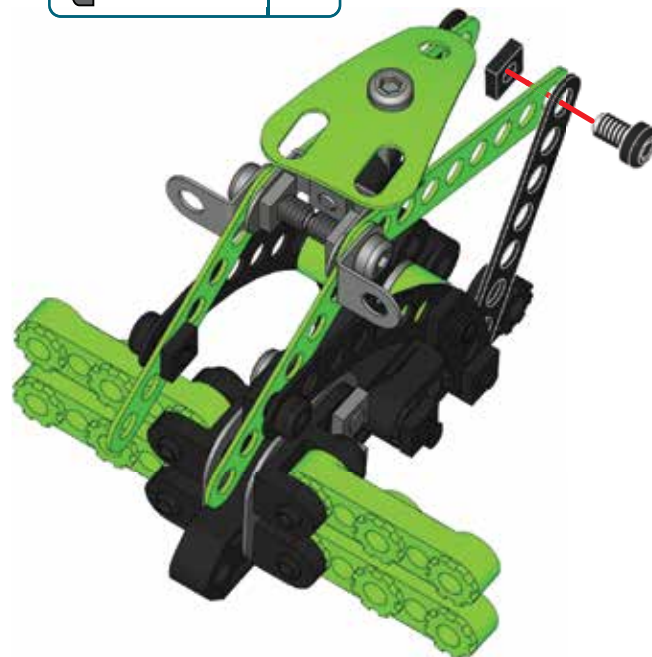
12

 S1 | 5,8 mm | A637 (0037B) X 1
15/64"
 A337 (0037A) X 1

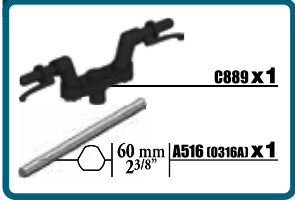


13

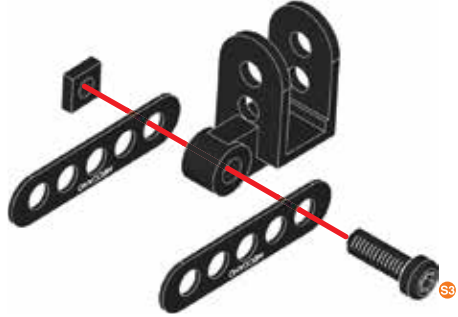
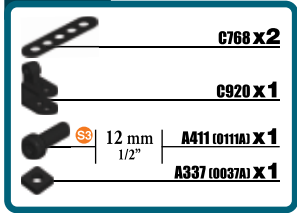
 S1 | 5,8 mm | A637 (0037B) X 1
15/64"
 A337 (0037A) X 1








14

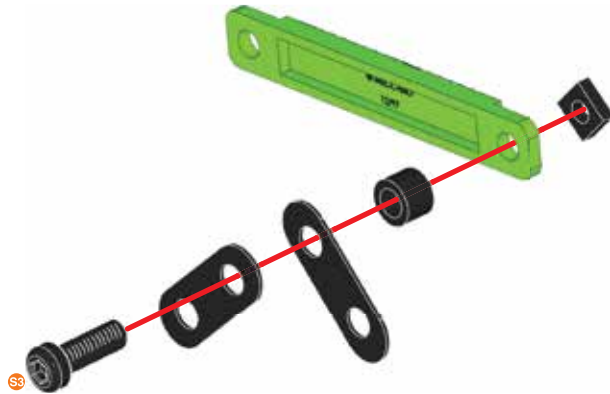


15







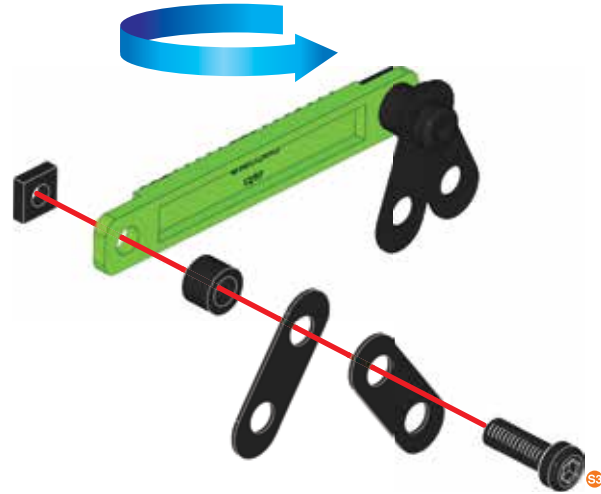
16

-  **A334 (0110C) X1**
-  **A806 (0806B) X2**
-  **A338 (0038B) X1**
-  12 mm | **A411 (0111A) X1**
-  **A337 (0037A) X1**



17

-  **A806 (0806B) X2**
-  **A338 (0038B) X1**
-  12 mm | **A411 (0111A) X1**
-  **A337 (0037A) X1**



18

	A426 (02601) X 1
 S1	5,8 mm A637 (0037B) X 1 15/64"
	A337 (0037A) X 1

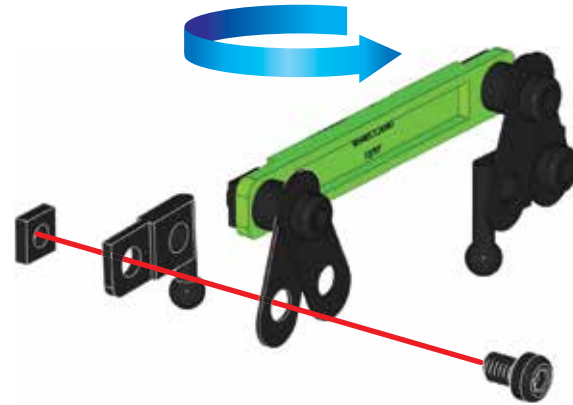
	S1	1:1
---	-----------	------------



19

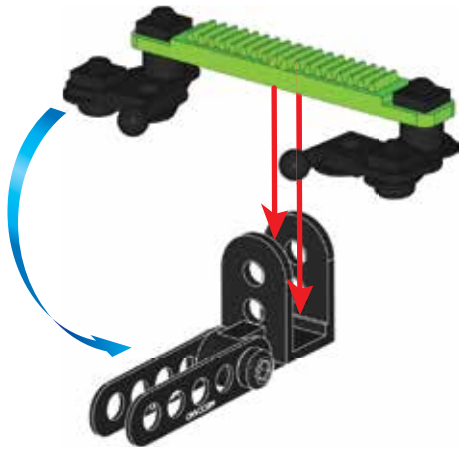
	A426 (02601) X 1
 S1	5,8 mm A637 (0037B) X 1 15/64"
	A337 (0037A) X 1

	S1	1:1
---	-----------	------------



20

15 + 19



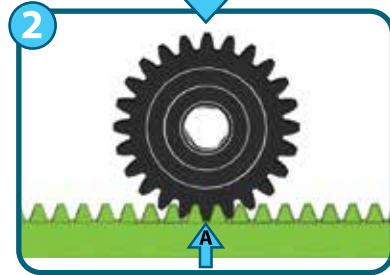
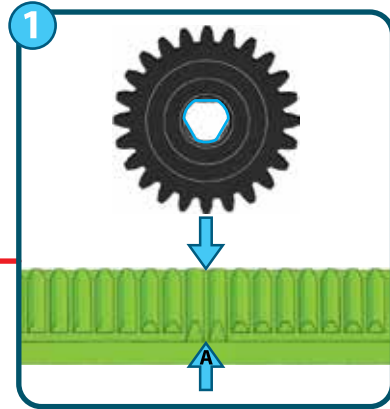
21

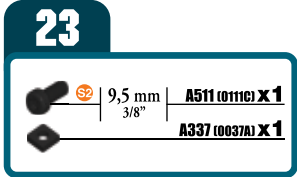
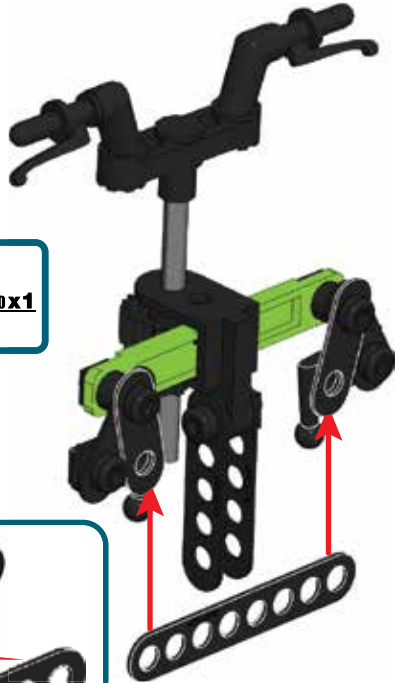
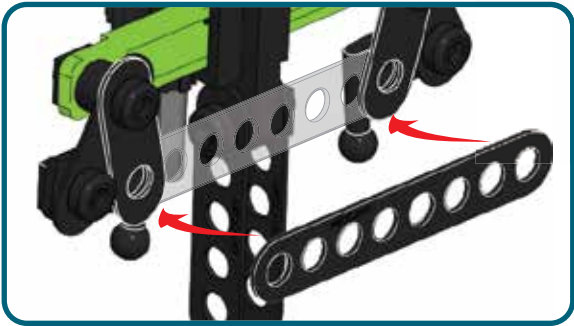
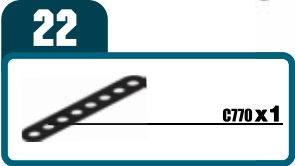
14 + 20




A631 (002503P) x 1

C867 x 1





24

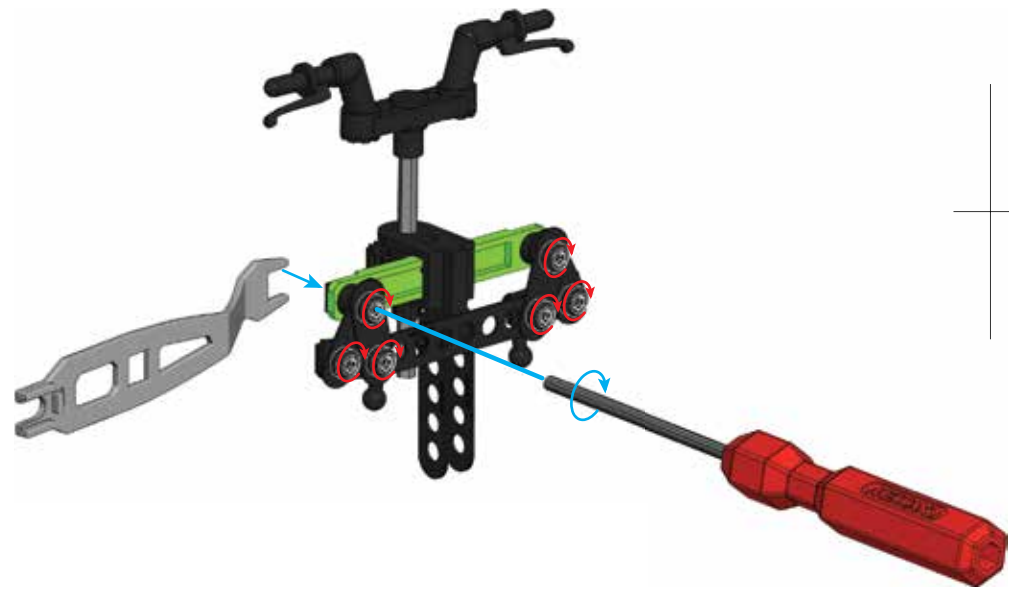
 9,5 mm | A511 (0111C) X 1
3/8" | A337 (0037A) X 1

 S2 | 1:1



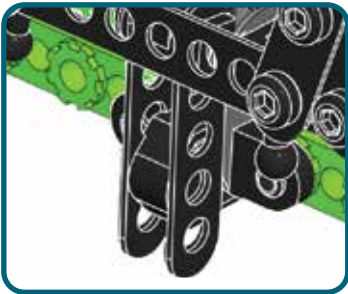
25

24







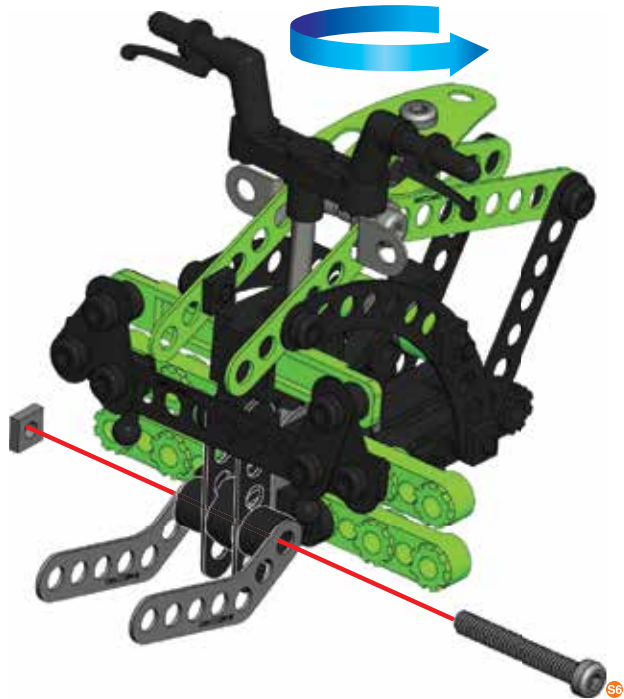
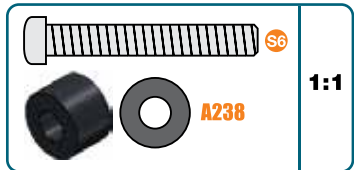
26

13 + 25



27

-  **675 x 2**
-  **A238 (0038A) x 2**
-  **28 mm | 1 1/8" | A611 (0111B) x 1**
-  **A337 (0037A) x 1**



28



A419 (02608) X 1



A421 (01260) X 1



29



C372 X 1



A912 (0111E) X 1

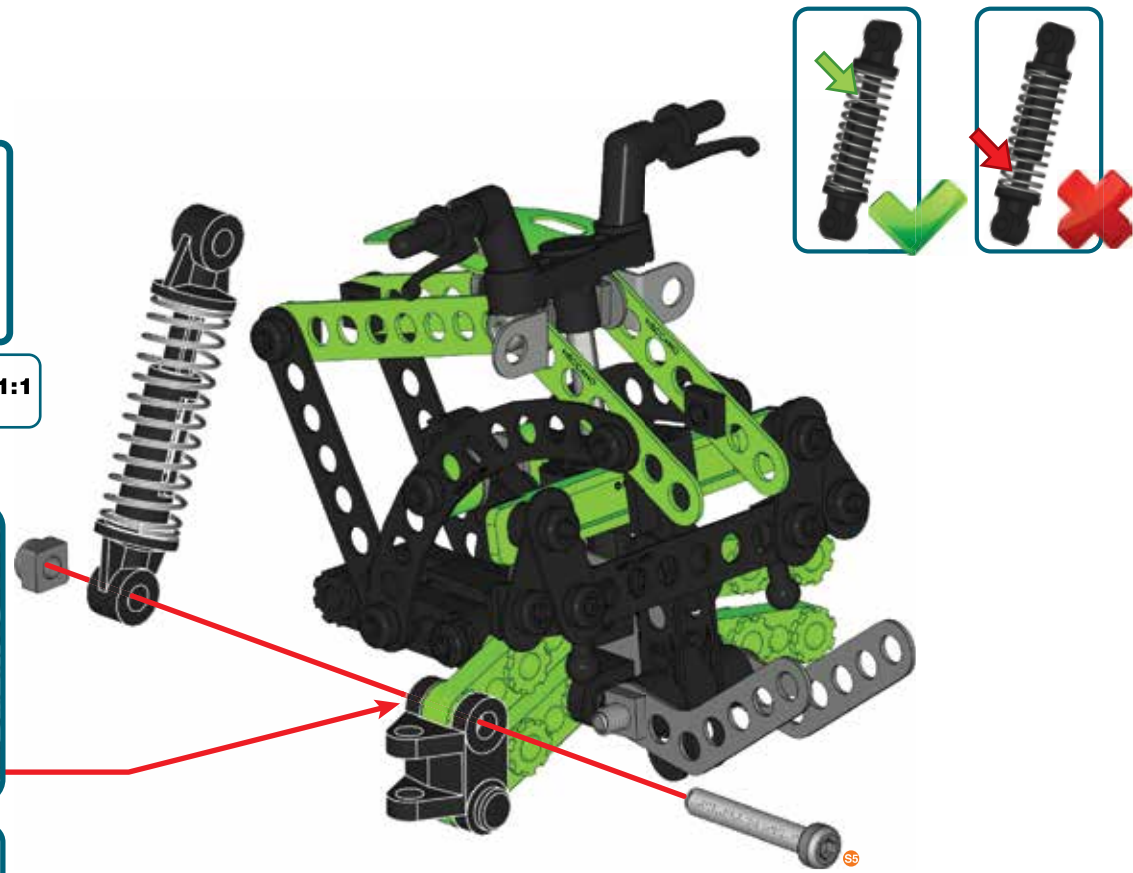
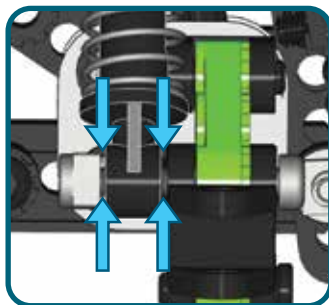


A737 (0037H) X 1





S5

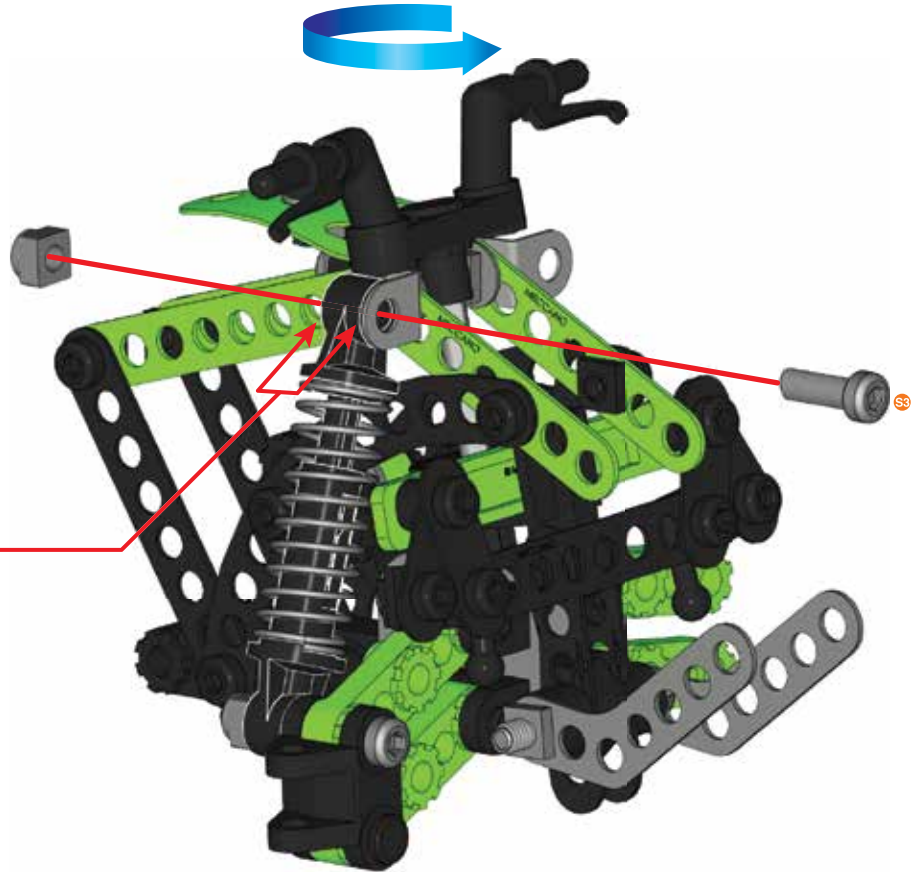
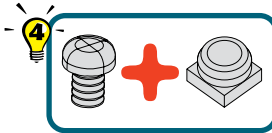
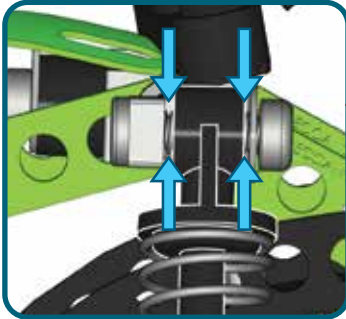
1:1



30

	12 mm 1/2"	A411 (0111A) X 1
		A737 (0037H) X 1

	S3	1:1
---	----	-----



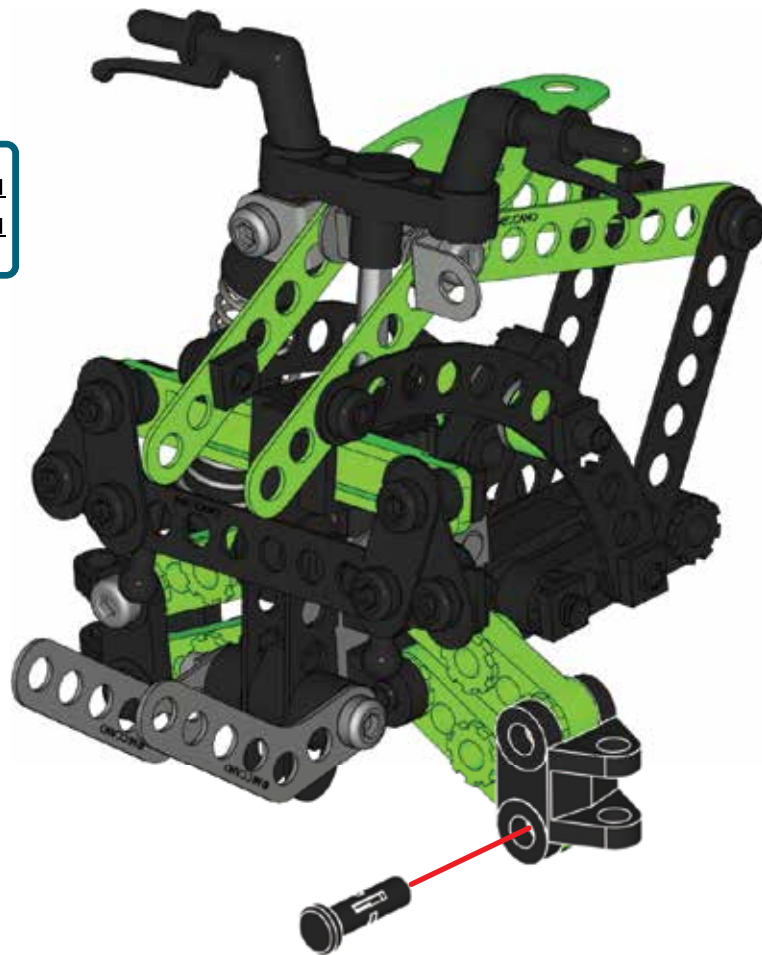
31






A419 (02608) X 1



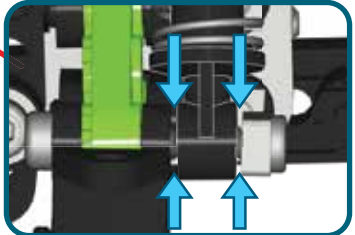
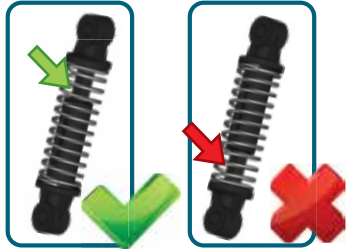
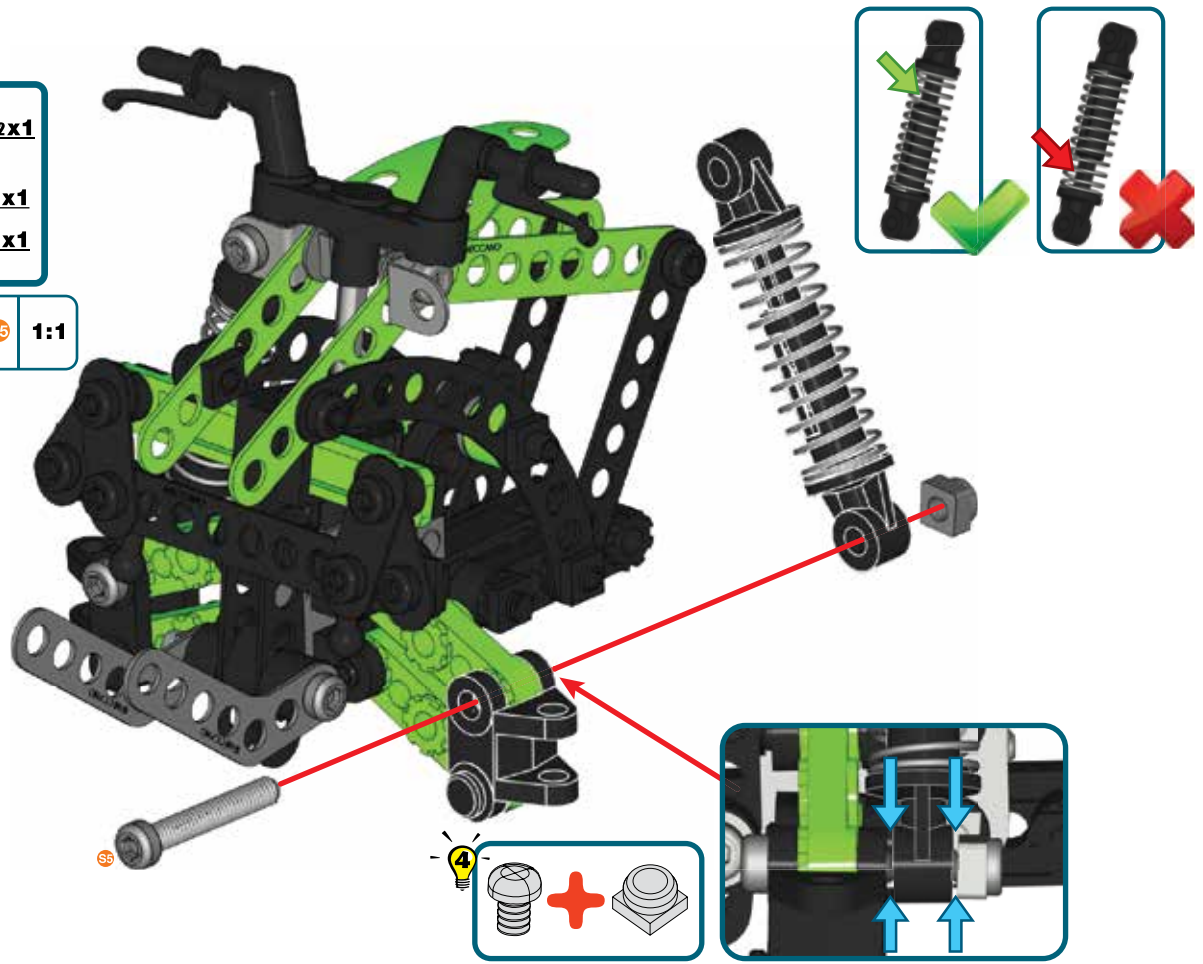
A421 (01260) X 1





32

-  C372 X 1
-  S5 | 25,4 mm | A912 (0111E) X 1
-  A737 (0037H) X 1

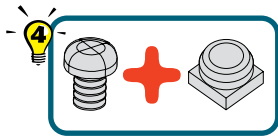
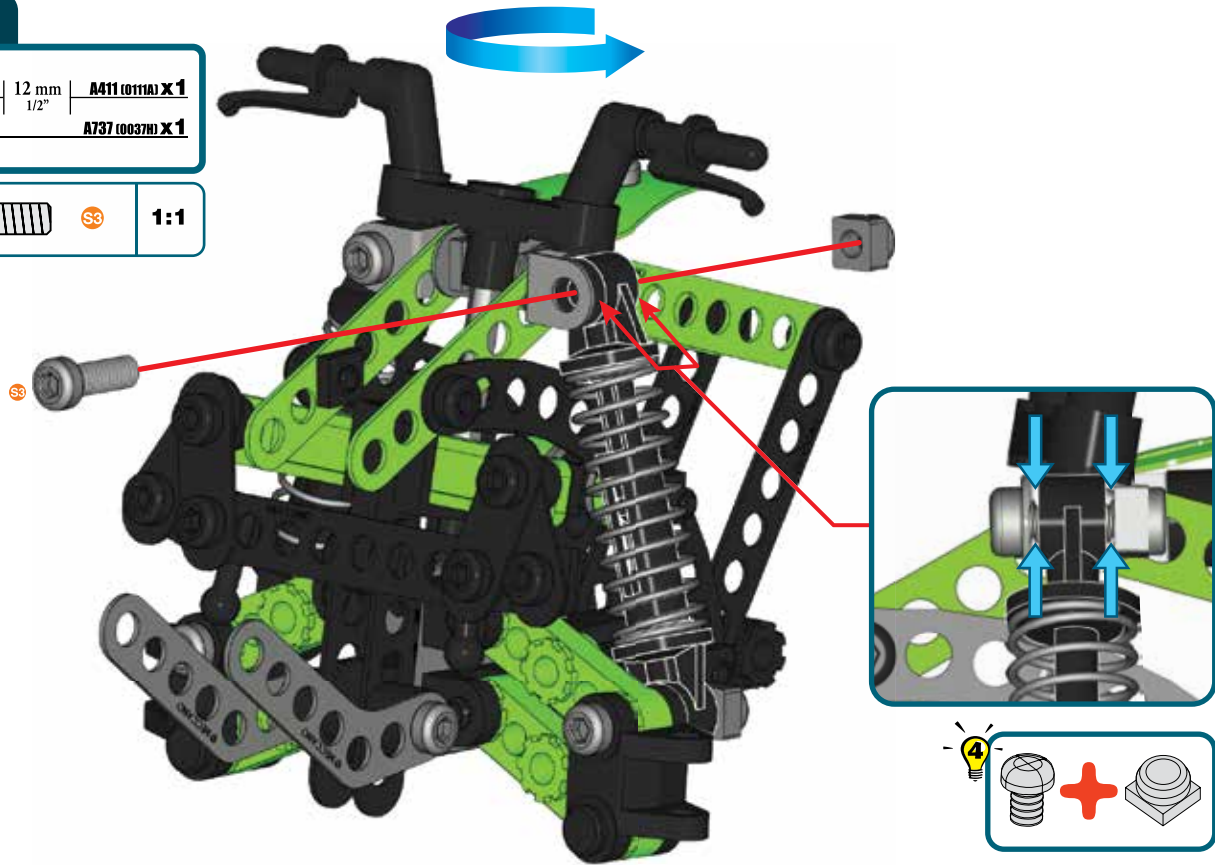
-  S5 1:1



33

 **SS** | 12 mm | **A411 (0111A) X 1**
 | **A737 (0037H) X 1**

 **SS** | **1:1**



34



A423 (0260F) X 1



A338 (0038B) X 2



23 mm
1 5/16"

A347 (0147G) X 1



A337 (0037A) X 1

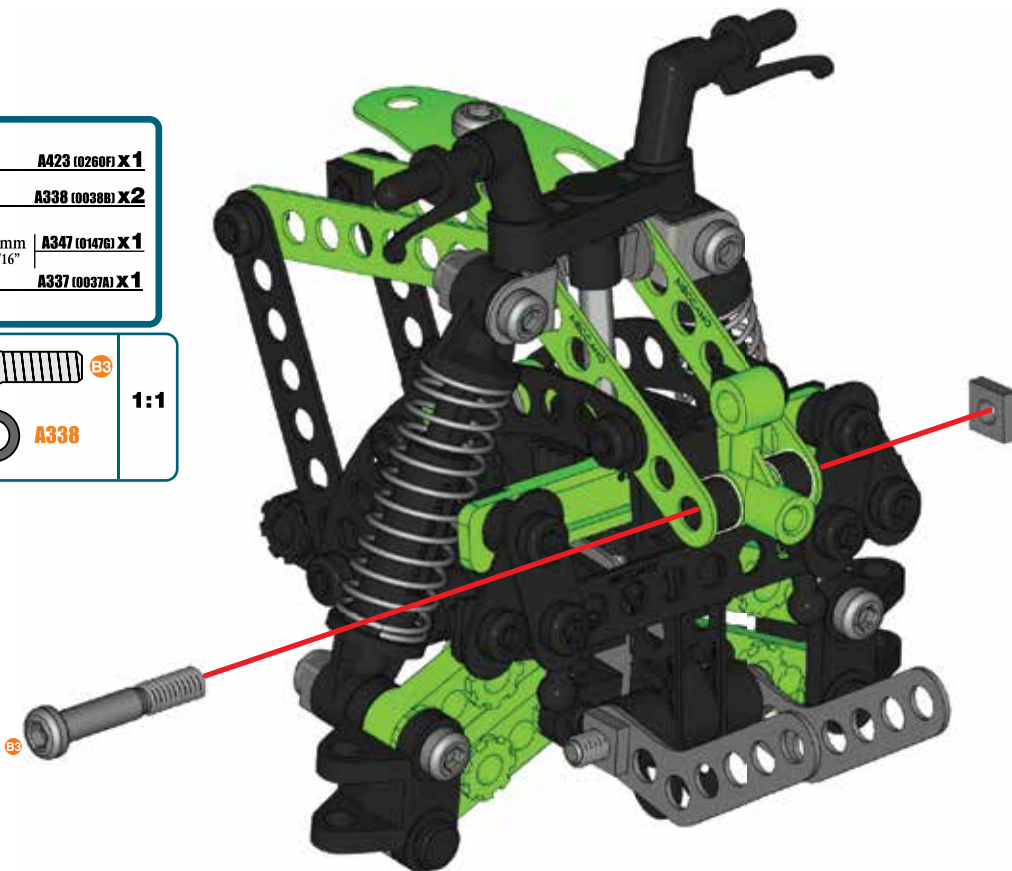


B3



A338

1:1



35



B695 X 1



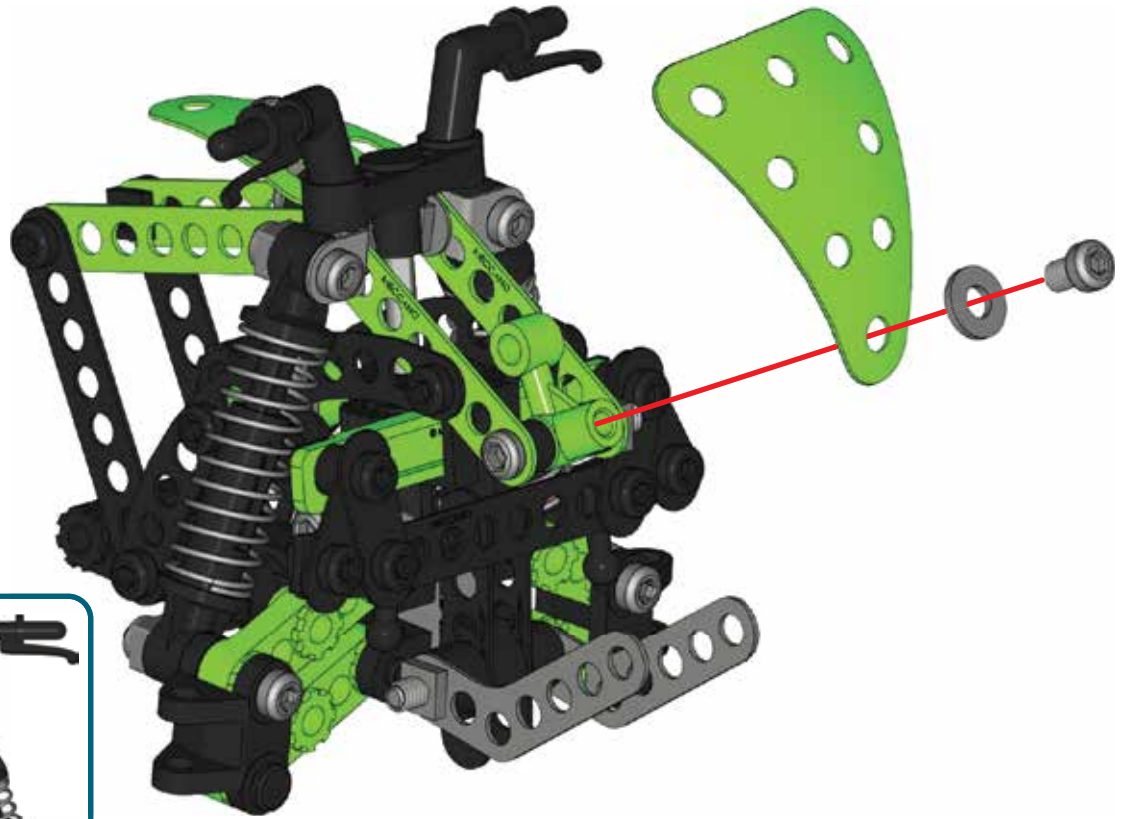
S1 5,8 mm | **A637 (0037B) X 1**
15/64"

A138 (0038) X 1



S1

1:1



36



A422 (0260F) X2

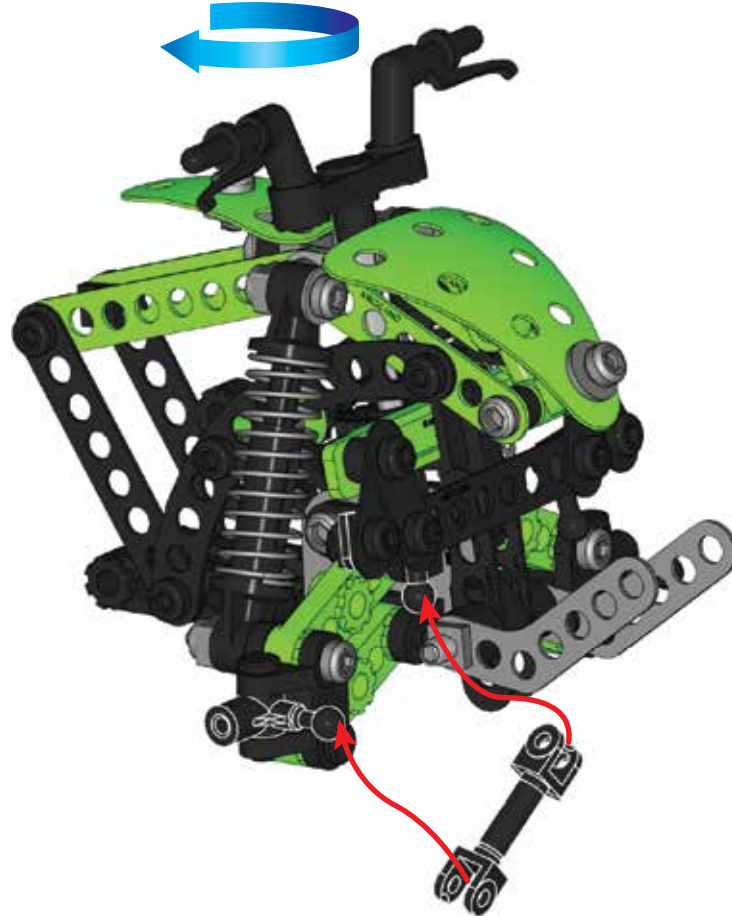
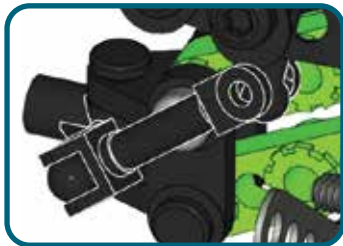
A421 (0126D) X2



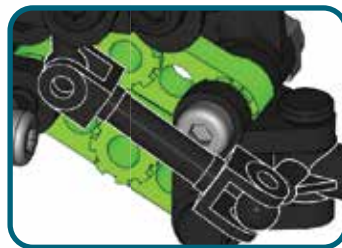
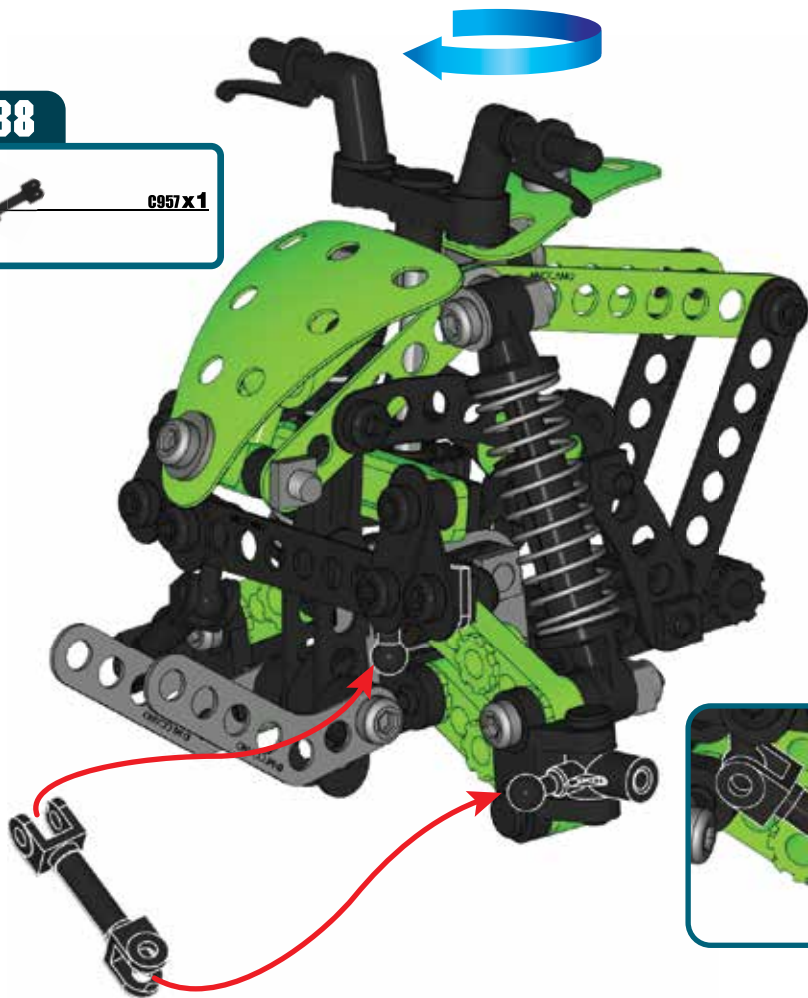
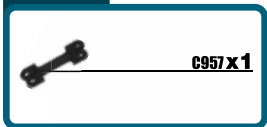
37



C957 x1



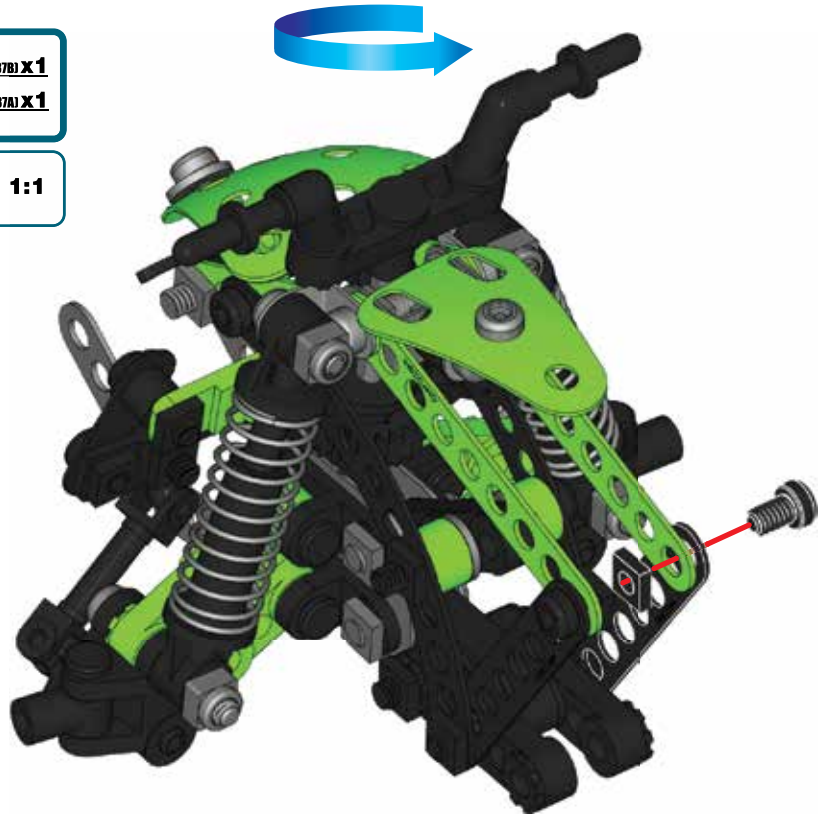
38



39

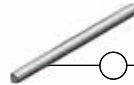
	 5,8 mm 15/64"	A637 (0037B) X 1
		A337 (0037A) X 1

		1:1
---	---	------------



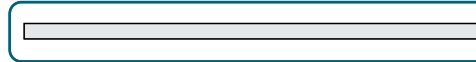


40

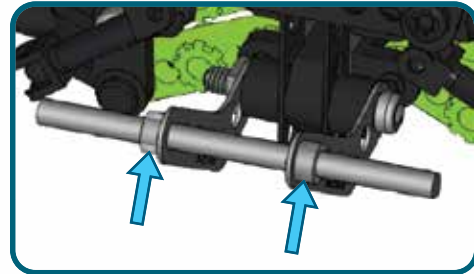


60 mm | A117 (0016A) X1

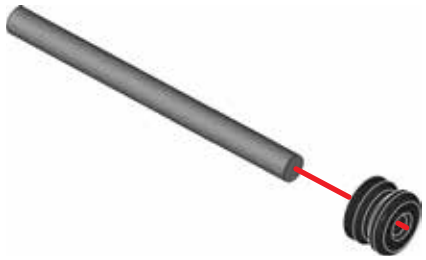
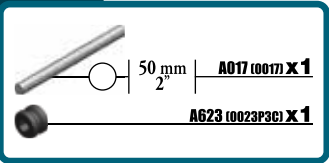
A259 (0059C) X2



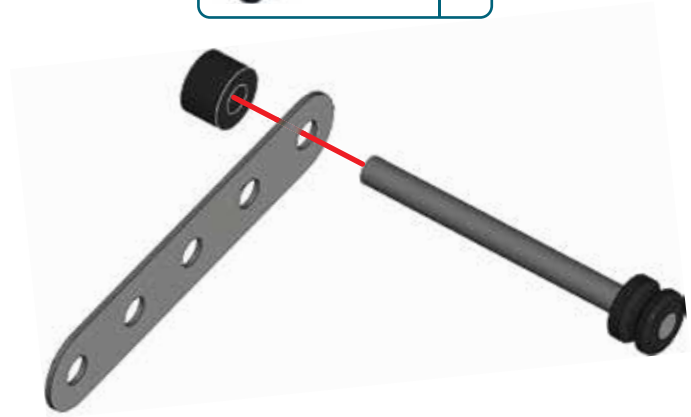
1:1



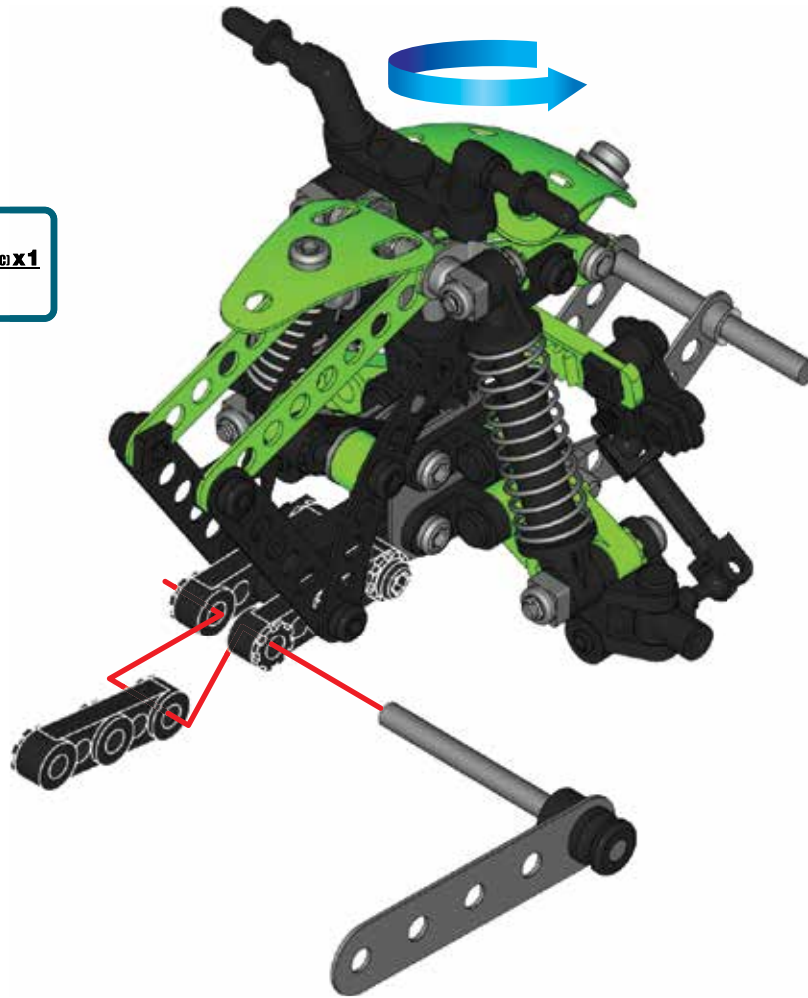

41






42

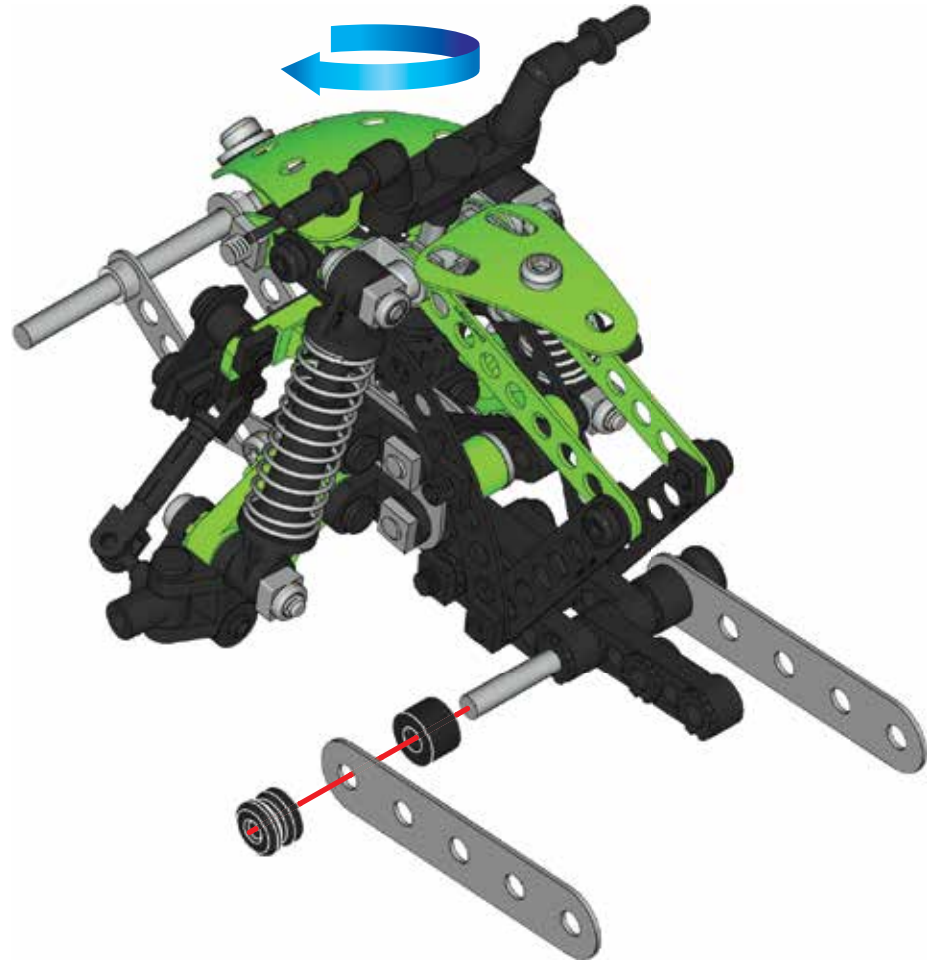


43 40 + 42 +
A420 (ø260c) x 1








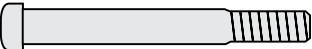
44

-  **A105 (0005) X 1**
-  **A238 (0038A) X 1**
-  **A623 (0023P3C) X 1**



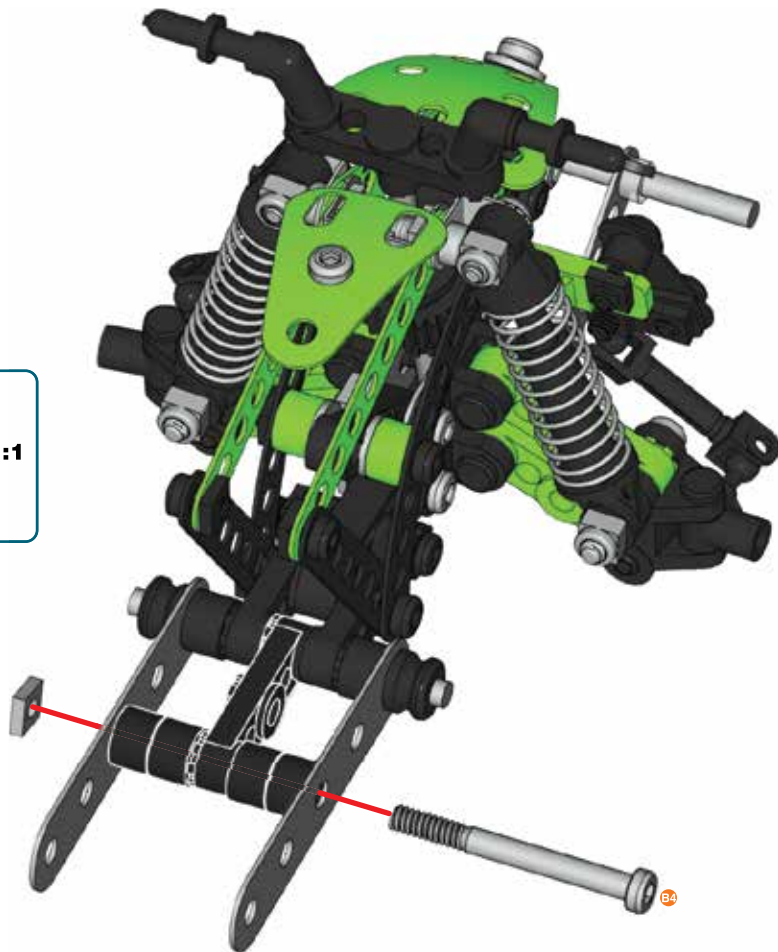
45

-  **A238 (0038A) x4**
-  **B696 x1**
38 mm
1 1/2"
-  **A337 (0037A) x1**









A238

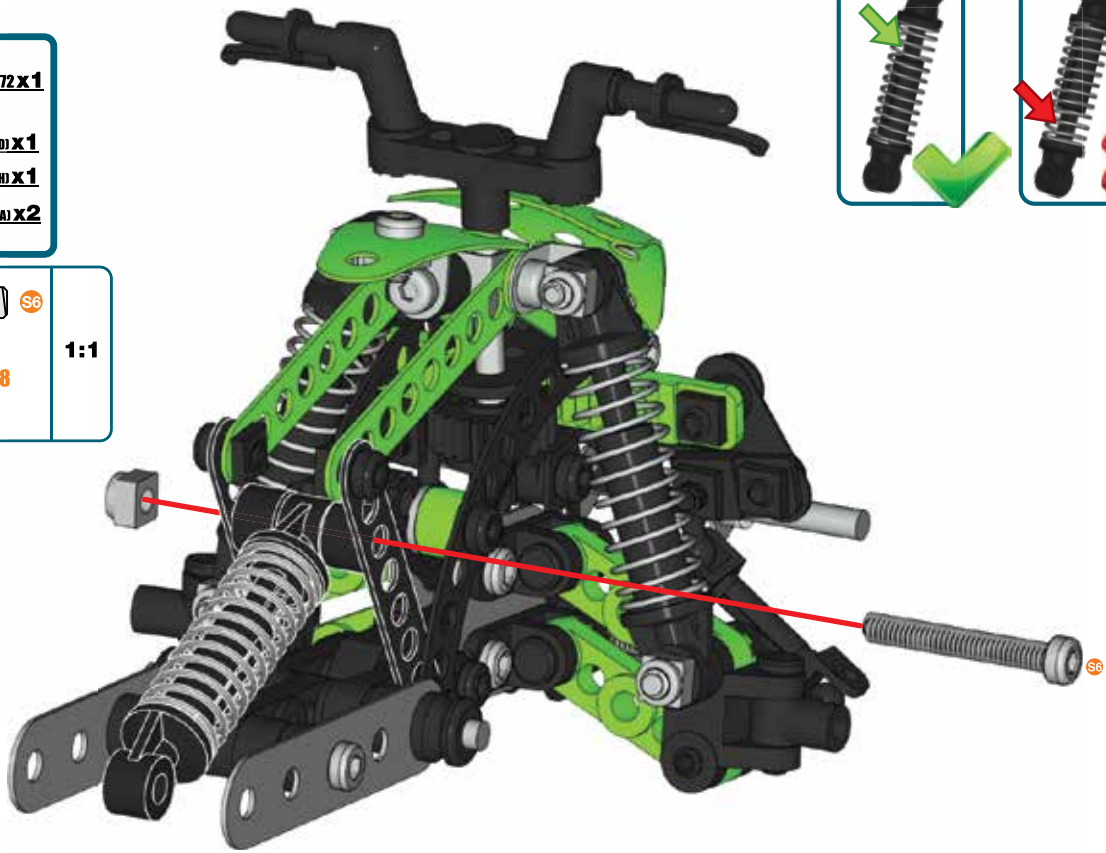
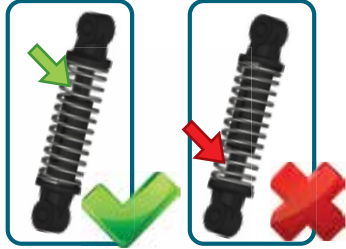
1:1



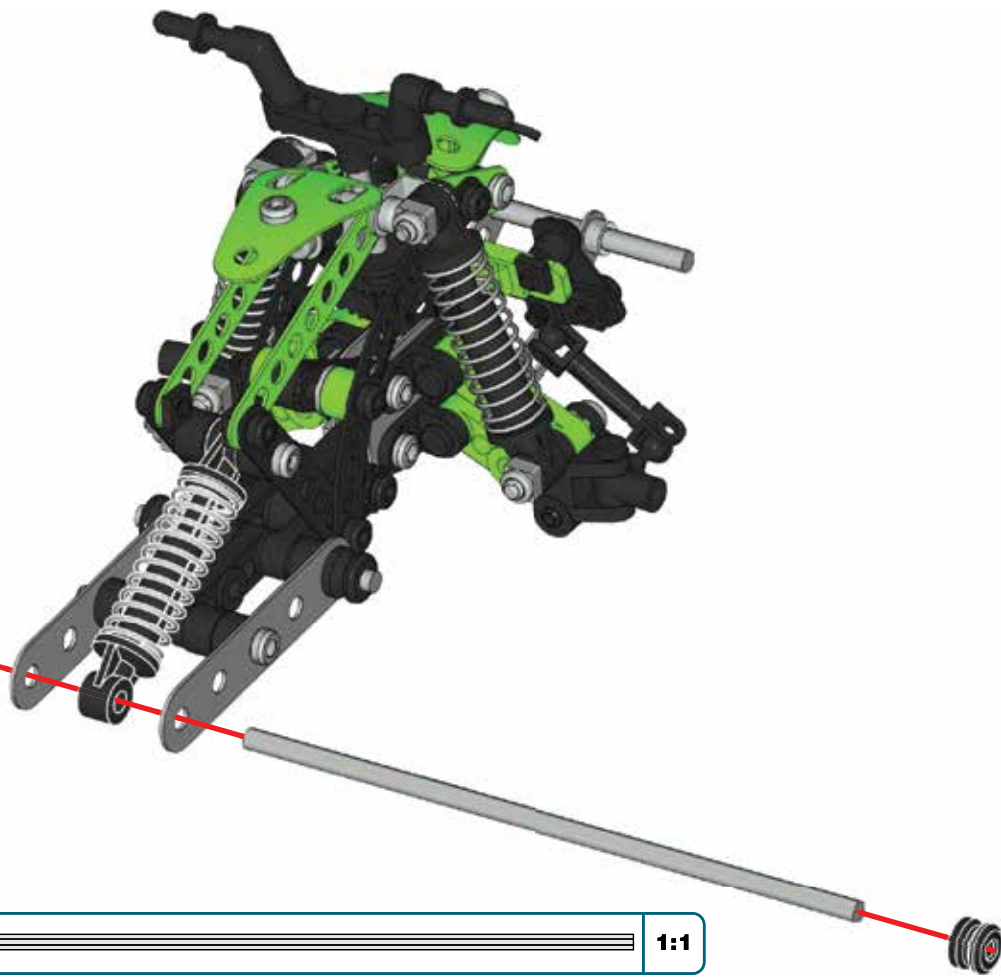
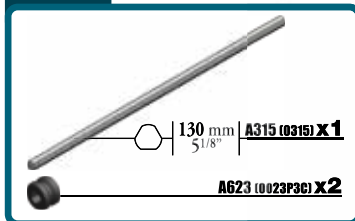
46

-  **C372 X 1**
-  **S6** | **28 mm** | **A611 (01110) X 1**
1 1/8"
-  **A737 (0037H) X 1**
-  **A238 (0038A) X 2**







-  **S6**
-  **A238**
- 1:1**




47






48

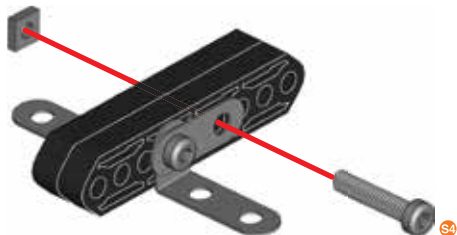
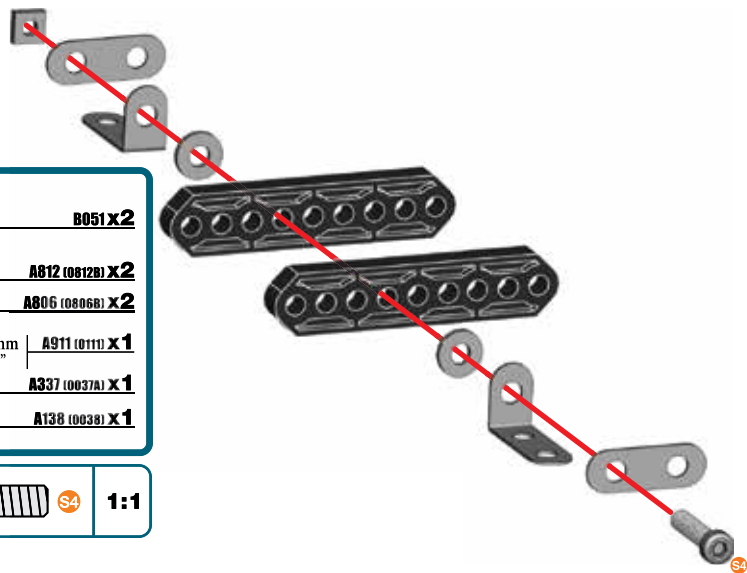
	B051 X2
	A812 (0812B) X2
	A806 (0806B) X2
	A911 (0111) X1
	A337 (0037A) X1
	A138 (0038) X1

	S4	1:1
---	-----------	------------






49

	A911 (0111) X1
	A337 (0037A) X1

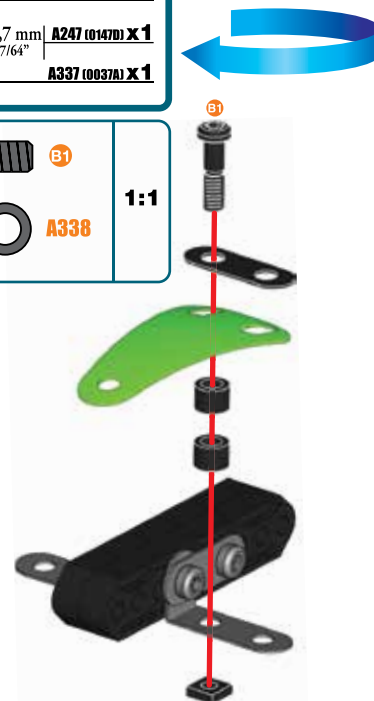
	S4	1:1
--	-----------	------------



50

	C916 X1
	A806 (0806B) X1
	A338 (0038B) X2
	A247 (0147D) X1
	A337 (0037A) X1

	S1	1:1
	A338	



51

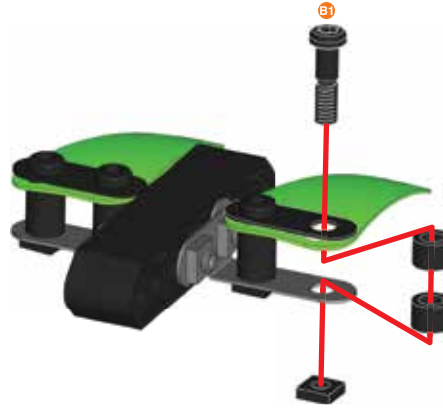
- A338 (00388) X2**
- A247 (01470) X1** | 14,7 mm | 37/64"
- A337 (0037A) X1**

**52**

- C916 X1**
- A806 (0806B) X1**
- A338 (00388) X2**
- A247 (01470) X1** | 14,7 mm | 37/64"
- A337 (0037A) X1**




**53**

- A338 (00388) X2**
- A247 (01470) X1** | 14,7 mm | 37/64"
- A337 (0037A) X1**

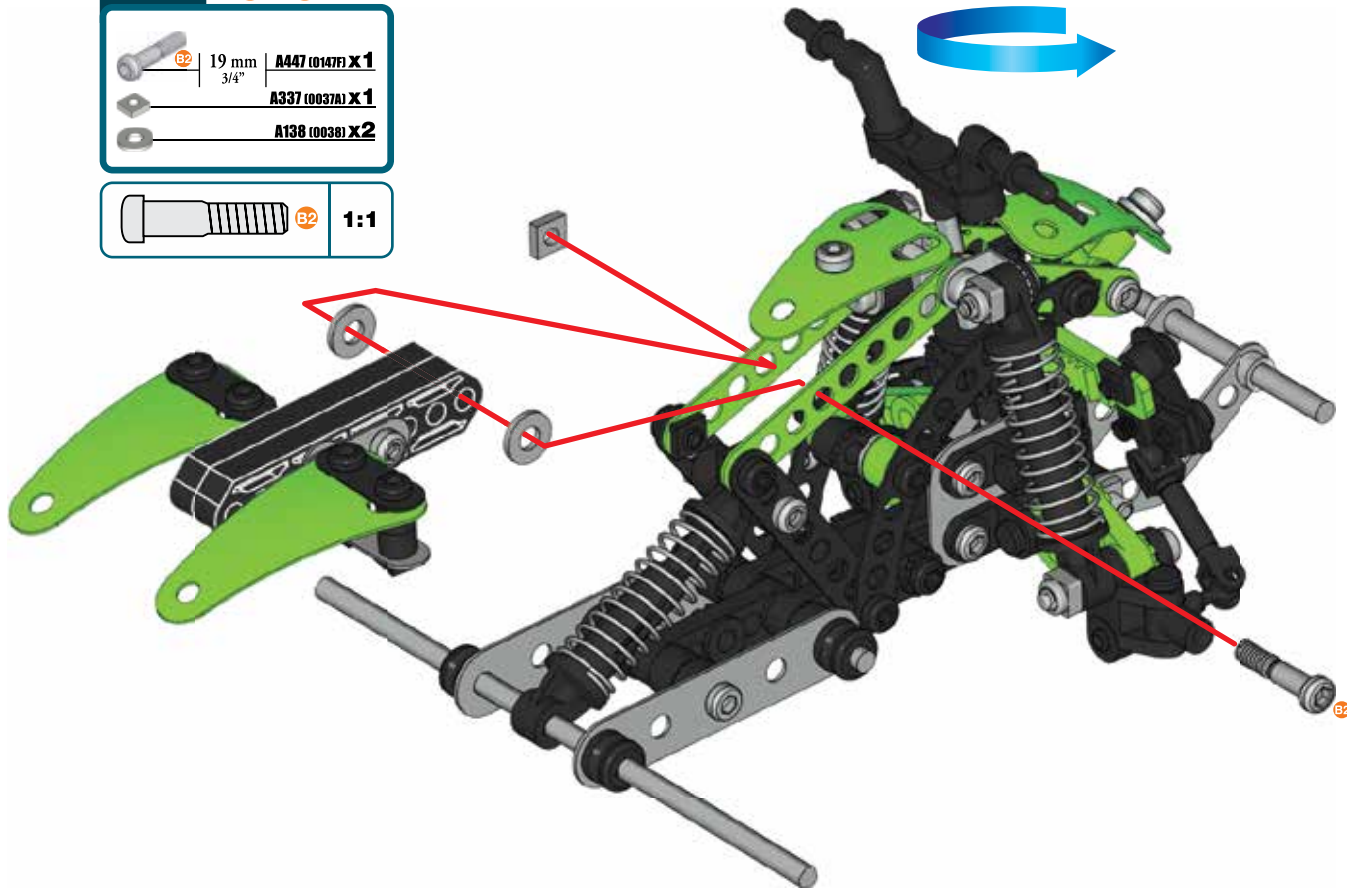


54

47 + 53 +

- | | | |
|---|---------------|------------------|
|  | 19 mm
3/4" | A447 (0147F) X 1 |
|  | | A337 (0037A) X 1 |
|  | | A138 (0038) X 2 |

- | | | |
|---|----|-----|
|  | B2 | 1:1 |
|---|----|-----|



55



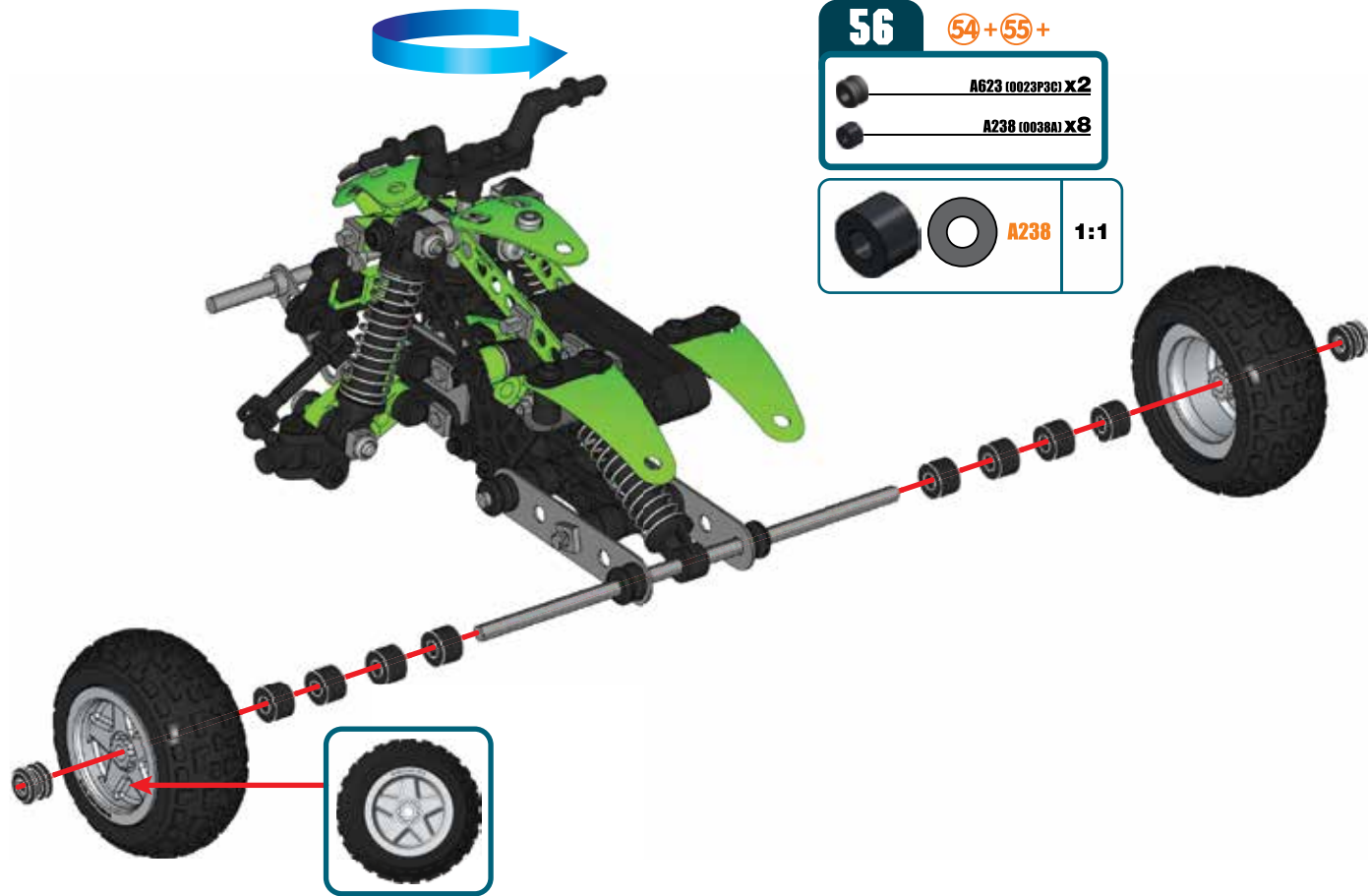
C890 x4




C901 x4


x4






57 **55+**


 **B2** | 19 mm
3/4" | **A447 (0147F) X 1**

 **B2** | **1:1**



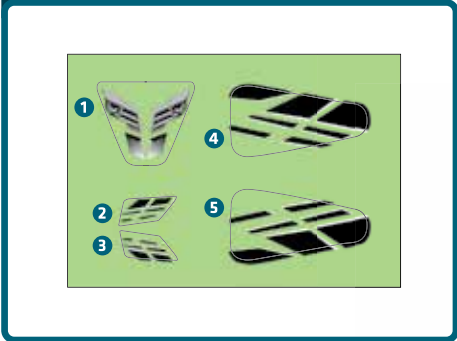
58 **55+**

 **B2** | 19 mm
3/4" | **A447 (0147F) X 1**

 **B2** | **1:1**



59

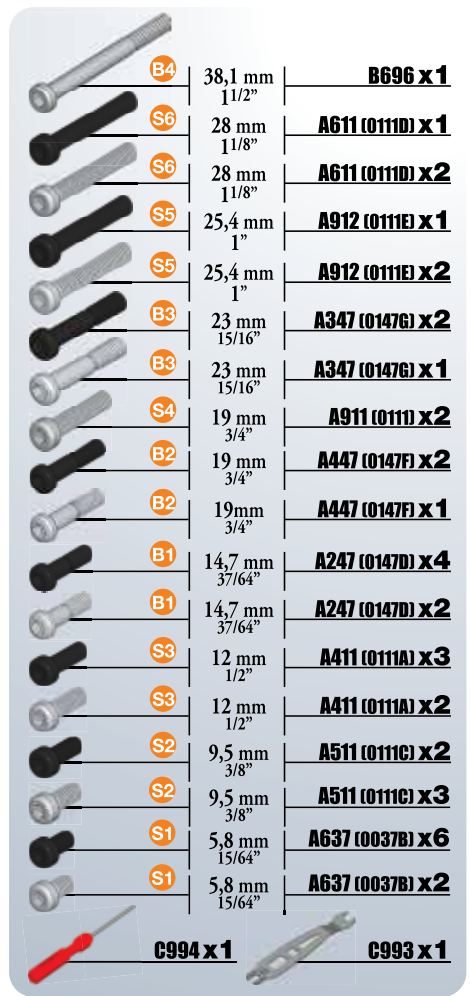
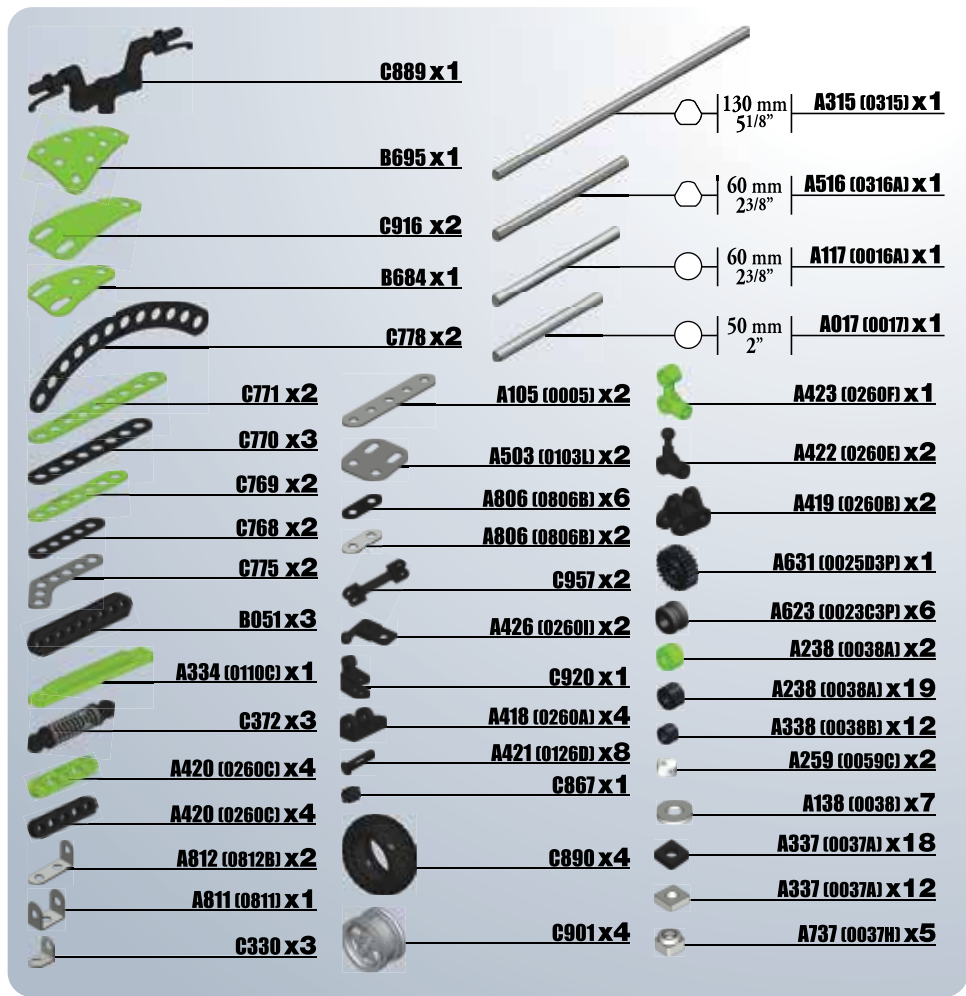






AVAILABLE ONLINE / DISPONIBLE EN LIGNE
DISPONIBLES EN LÍNEA / ONLINE VERFÜGBAR
ONLINE BESCHIKBAAR / DISPONIBILI ONLINE
DISPONÍVEL ONLINE / ДОСТУПНЫ В ОНЛАЙН-МАГАЗИНЕ

- **GB** Building instructions for model#2 are available at www.meccano.com.
Only one model can be built at a time.
- **F** La notice de montage du modèle 2 est disponible sur www.meccano.com.
Les pièces fournies ne permettent de monter qu'un seul modèle à la fois.
- **E** Hay instrucciones de construcción disponibles para el modelo 2 en www.meccano.com.
Solo es posible construir un modelo a la vez.
- **D** Die Bauanleitung für Modell Nr. 2 ist auf www.meccano.com zu finden.
Jeweils nur eins der Modelle baubar.
- **NL** Bouwinstructies voor model#2 zijn verkrijgbaar op www.meccano.com.
Er kan maar een model tegelijk worden gebouwd.
- **I** Le istruzioni di montaggio del modello 2 sono disponibili alla pagina www.meccano.com.
Permette di realizzare un solo modello per volta.
- **P** As instruções de montagem para o modelo 2 estão disponíveis em www.meccano.com.
Só é possível montar um modelo de cada vez.
- **R** Инструкции по сборке модели №2 можно найти на сайте www.meccano.com.
Одновременно можно построить только одну модель.



GB. Remove all packaging before use. Retain this information, addresses and phone numbers for future reference. Content may vary from pictures. Meccano reserves the right to discontinue the website www.meccano.com at any time. An adult should periodically check this toy to ensure no damage or hazard exist if so, remove from use. Children should be supervised during play.

F. Retirer tout l'emballage avant utilisation. Conserver les informations, adresses et numéros de téléphone pour consultation ultérieure. Le contenu peut différer des images. Meccano se réserve le droit de supprimer le site Internet www.meccano.com à tout moment. Un adulte doit régulièrement examiner ce jouet afin de s'assurer qu'il ne présente pas de dommage ni de risque. En cas de problème, ne plus l'utiliser. Les enfants doivent être surveillés lorsqu'ils jouent.

E. Retire todo el embalaje antes de utilizar el producto. Conserve toda la información, las direcciones y los números de teléfono para futuras referencias. El contenido del paquete puede no corresponder con las imágenes. Meccano se reserva el derecho a suspender el sitio web www.meccano.com en cualquier momento. Un adulto debe revisar de forma periódica el juguete para asegurarse de que no supone un riesgo o peligro para el niño; si así fuera el caso, interrumpa su uso. Supervise a los niños mientras juegan con el producto.

D. Entfernen Sie vor der Benutzung sämtliche Verpackungsmaterialien. Alle Informationen, Adressen und Telefonnummern bitte für mögliche Rückfragen aufbewahren. Der Packungsinhalt kann von den Bildern abweichen. Meccano behält sich das Recht vor, den Betrieb der Website www.meccano.com jederzeit einzustellen. Ein Erwachsener sollte regelmäßig sicherstellen, dass das Spielzeug keine Gefahr darstellt, und es gegebenenfalls entfernen. Kinder sollten beim Spielen beaufsichtigt werden.

NL. Verwijder de verpakking voor gebruik. Bewaar deze informatie, adressen en telefoonnummers voor toekomstig gebruik. Inhoud kan afwijken van illustraties. Meccano behoudt zich het recht voor de website www.meccano.com wanneer gewenst buiten gebruik te stellen. Een volwassene dient dit speelgoed regelmatig te controleren op schade en gevaren. Indien het speelgoed is beschadigd of indien er een gevaarlijke situatie kan ontstaan, dient het product te worden weggegooid. Ouderlijk toezicht is vereist als kinderen met dit speelgoed spelen.

I. Rimuovere l'imballo prima dell'uso. Conservare informazioni, indirizzi e numeri di telefono per riferimento futuro. Il prodotto potrebbe essere differente dalle immagini. Meccano si riserva il diritto di rimuovere il sito www.meccano.com in qualsiasi momento. È consigliabile un controllo

periodico del giocattolo da parte di un adulto: in caso di danni o rischi interrompere l'uso. È richiesta la supervisione di un adulto durante il gioco.

P. Remova totalmente a embalagem antes de utilizar. Guarde todos os endereços, números de telefone e demais informações para consulta e referência. O conteúdo poderá ser diferente das ilustrações. A Meccano reserva-se o direito de descontinuar o site www.meccano.com a qualquer altura. Um adulto deve verificar o brinquedo periodicamente para garantir que ele não apresenta danos ou riscos. Se houver, é necessário que o brinquedo seja retirado de uso. Crianças devem ser supervisionadas enquanto brincam.

R. Снимите все упаковочные материалы перед использованием. Запишите указанные на упаковке адреса и номера телефонов, чтобы у вас была возможность связаться с нами. Содержимое упаковки может отличаться от иллюстрации. Компания Meccano оставляет за собой право прекратить использование сайта www.meccano.com в любое время. Регулярно проверяйте состояние игрушки на наличие повреждений и возможных рисков для ребенка. Если таковые имеются, игрушку не следует использовать. Во время игры за детьми следует присматривать.

- ⚠ Warning: CHOKING HAZARD – Small parts.
- ⚠ Attention ! RISQUE D'ETOUFFEMENT – Contient de petits éléments.
- ⚠ Advertencia: PELIGRO DE ASFIXIA – Contiene piezas pequeñas no conveniente para niños menores de 3 años.
- ⚠ Achtung: ERSTICKUNGSGEFAHR – Kleinteile.
- ⚠ Waarschuwing: VERSTIKKINGSGEVAAR – Kleine onderdelen.
- ⚠ Attenzione: RISCHIO DI SOFFOCAMENTO – Pezzi piccoli.
- ⚠ Aviso: PERIGO DE ASFIXIA – Peças pequenas.
- ⚠ Осторожно! ОПАСНОСТЬ ДУДУШЬЯ – Мелкие детали.

- ⚠ CAUTION: Stickers not intended to be placed on skin.
- ⚠ MISE EN GARDE: Les autocollants ne sont pas destinés à être placés sur la peau.
- ⚠ PRECAUCIÓN: Las calcomanías no deben colocarse sobre la piel.
- ⚠ ACHTUNG: Sticker sind nicht zum Aufkleben auf die Haut geeignet.
- ⚠ VOORZICHTIG: Stickers zijn niet voor op de huid bedoeld.
- ⚠ ATTENZIONE: Non applicare gli adesivi sulla pelle.
- ⚠ ATENÇÃO: os autocolantes não devem ser colocados na pele.
- ⚠ ОСТОРОЖНО: Стикеры не предназначены для приклеивания к коже.



UK – 0800 206 1191, SERVICEUK@SPINMASTER.COM
FRANCE – 0800 909 150, SERVICEFR@SPINMASTER.COM
ESPAÑA – SERVICIO@SPINMASTER.COM
DEUTSCHLAND – 0800 0101 0222, KUNDENSERVICE@SPINMASTER.COM
SCHWEIZ – 0800 561 350 • ÖSTERREICH – 0800 29 72 67
NEDERLAND – 0800 022 36 83, KLANTENSERVICE@SPINMASTER.COM
BELGIË/BELGIQUE – 0800 77 688 • LUXEMBOURG – 800 28 044
ITALIA – 800 788 532, SERVIZIO@SPINMASTER.COM
MEXICO – 53.51.44.00
WWW.SPINMASTER.COM



NORTH AMERICA : 1-800-622-8339 customer@spinmaster.com
AMÉRIQUE DU NORD :

SPIN MASTER LTD., 450 FRONT STREET WEST, TORONTO, ON M5V 1B6 CANADA.
DISTRIBUTED IN EU BY SPIN MASTER INTERNATIONAL, S.A.R.L.,
16 AVENUE PASTEUR, L-2310, Luxembourg. www.spinmaster.com
Made in France by / Fabriqué en France par / Hecho en Francia por
Meccano : 363, avenue de Saint-Exupéry 62100 Calais - France



TM & © 2015 MECCANO for packaging, instructions and models built with this set. TM & © 2015 MECCANO pour l'emballage, les notices et modèles de ce coffret. ® MECCANO is an exclusive trademark of MECCANO. Spin Master logo is a trademark of Spin Master Ltd. ® MECCANO est une marque de commerce exclusive de MECCANO. Le logo de Spin Master est une marque de commerce de Spin Master Ltd. All rights reserved. Tous droits réservés.
T91778_0002_20070950_GML_IB_R1_MEC_Vehicle_FR